

# CATALOGUE MEDICAL EQUIPMENT

FIRST EDITION



Website: [www.harleysltd.com](http://www.harleysltd.com)

Email: [equipments@harleysltd.com](mailto:equipments@harleysltd.com)







# Contact Us

**Harley's Limited,  
Head Office 63 Westlands Road,  
Nairobi, Kenya**

**Telephone:** +254 20 374 7353

**Mobile:** +254 722 202030

**Email :** equipments@harleysltd.com  
technical@harleysltd.com  
sales@harleysltd.com

**Website :** www@harleysltd.com

**Eldoret Branch Office, behind  
Central Bank of Kenya, Uganda Road**

**Telesales:** +254725 203032

**Mobile:** +254708 203031

**Mombasa Branch Office, Zanzibar Road, op-  
posite House of Manji Depot, Shimanzi**

**Telesales:** +254726 000942

+254743 078743

**Email:** sales.msa@harleysltd.com

# Hospital Machines & Equipment Catalogue



# Table of Contents

<b>ICU &amp; Theatre Equipment</b>	(6-25)
- Patient monitoring & Life support	
- Anaesthesia & Critical care support	
<b>Diagnostics &amp; Lab Equipment</b>	(26-35)
- Lab Machines	
- Diagnostic Equipment	
- UltraSound & UltraSonic Equipment	
<b>Maternal Care Equipment</b>	(36-41)
- Child Support Equipment	
- Mother & Child	
- Gynaecare Equipment	
<b>Medical Oxygen Equipment</b>	(42-45)
- Oxygen concentrators.	
- Oxygen plants and	
- Commercial oxygen plants	
<b>Dental Machines &amp; Equipment</b>	(46-48)
- Air compressors	
- Teeth Whitening Machines	
- Dental Units	
<b>Xray Machines &amp; Imaging Equipment</b>	(49-51)
- Radiography	
- Film Processors	
<b>Central Sterile Supply Department (CSSD)</b>	(52-55)
- Autoclaves	
- Holloware	
- Sterilizing Drums	

# ICU & Theatre *Equipment*

- Patient monitoring & Life support
- Anaesthesia & Critical care support



# Elite V8/V6/V5

## Modular Patient Monitor



Edan Elite V5



Edan Elite V6



Edan Elite V8

- 17"/15"/12.1"high resolution color TFT-LCD display
- Full touch screen operation with customizable shortcut menu
- Echo-friendly no fan design
- Up to 33 types o ARR can be detected with optimized iSEAPTM ECG algorithm
- SEMIPR 12-lead diagnosis algorithm with 208 kinds of analysis result
- iMATM SpO2 algorithm with outstanding motion resistance and low perfusion resistance performance
- Perfusion Index(P)measurement as blood perfusion indicator
- Optional Nellcor SpO2 with SatsecondsTM technology
- iCUFFS TM NIBP algorithm optimized for cardiac patients,hypertensive patients and neonatal patients
- iCARBTM algorithm with intelligent CO2 Pseudo wave identification technology
- Built in modified early warning scores(MEWS)system
- Both non-volatile built in memory and USB/SD external storage available
- VGA/DVI output and analogue output

- LAN/WIFI connection with DHCP supported
- Barcode scanner supported through USB
- Bi directional communication with MFM-CMS
- Support ethernet printer
- Seamlessly interact with HIS/EMR via HL7

### Parameter option for main module(XM and Im20):

- 3/5-lead ECG,RESP,SPO2,NIBP,2-TEMP,PR
- 12-lead ECG,Nellcor SpO2,SunTeh NIBP
- 2-IBP(ICP),Respironics CO2(sidesream only for Im20)

### Parameter options for standalone modules

- IBP (ICP),C.O.,ICG,EDAN G2 CO2(sidestream), Respironic CO2(sidestream/mainstream)
- Masimo PHASEIN AG/O2( sidesream/mainstream)
- Drager AG/O2 ( sidestream),BIS,RM

## im20

### Transport Patient Monitor



- 5" high resolution color TFT-LCD display
- Full touch screen operation with customizable short cut menu
- Echo friendly no fan design
- Ambulatory design with IP44 waterproof & dustproof,1.2m shock resistance
- Up to 33 types of ARR can be detected with optimized ISEAPTM ECG algorithm
- SEMIP R 12-lead diagnosis algorithm with 208 kinds of analysis results
- Perfusion index(p) measurement as blood perfusion indicator
- Optical Nellcor SpO2 with SatSecondsTM technology
- iCUFFS TM NIBP algorithm optimized for cardiac patient,hypertensive patient,and neonatal patient
- Optional 2-channel invasive blood pressure
- The plug and play EFM module using together with Im20 for capnography monitoring
- Large capacity built in memory for power off storage
- Built in WIFI as standard configuration
- Bi-directional communication with MFM-CMS central station
- Seamlessly interact with HIS/EMR via HL7

# im80/im70/im60/im50

Multi-parameter patient monitor



### Comprehensive monitoring from Acute to Sub acute cares

- 12"/12.1"/10.4/8.4"high resolution color TFT-LCD display
- Full touch screen operation with customizable shortcut menu
- Echo-friendly no fan design
- Up to 33 types o ARR can be detected with optimized iSEAPTM ECG algorithm
- SEMIPR 12-lead diagnosis algorithm with 208 kinds of analysis result
- iMATTM SpO2 algorithm with outstanding motion resistance and low perfusion resistance performance
- Perfusion Index(P)measurement as blood perfusion indicator
- Optional Nellcor SpO2 with Satseconds™ technology
- iCUFSTM NIBP algorithm optimized for cardiac patients,hypertensive patients and neonatal patients
- iCARBTM algorithm with intelligent CO2 Pseudo wave identification technology
- Built in modified early warning scores(MEWS)system
- Both non-volatile built in memory and USB/SD external storage available
- VGA/DVI output and analogue output
- LAN/WIFI connection with DHCP supported
- Barcode scanner supported through USB
- Bi directional communication with MFM-CMS
- Support ethernet printer
- Seamlessly interact with HIS/EMR via HL7

### Standard Parameters:

- 3/5-lead ECG,RESP,SPO2,NIBP,2-TEMP,PR

# xSeries | x8/x10/x12

Multi-parameter patient monitor



detection

- Optional Nellcor SpO2 with Satseconds™ technology
- iCUFSTM NIBP algorithm optimized for cardiac patients,hypertensive patients and neonatal patients
- iCARBTM algorithm with intelligent CO2 Pseudo wave identification technology
- Unique NIBP clean mode and dual dust filter design makes no blockages inside and provides accurate NIBP readings
- Both non-volatile built in memory and USB/SD external storage available
- Optional Nurse call/analogue output/Defib sync/VGA output
- LAN/WIFI connection with DHCP supported
- Barcode scanner supported through USB
- Superior water trap with smart air channel inside,prevent water leakage
- Support ethernet printer
- Seamlessly interact with HIS/EMR via HL7

### Standard Parameter:

- 3/5 lead ECG,RESP,EDAN SPO2,EDAN NIBP,TEMP(X8 :1-TEMP,X10/X12 :2-TEMP)

### Optional parameters:

- 6/12-lead ECG,IBP(X10,X12 :2-IBP),C.O.(X12),EDAN G2 CO2

- 12.1"/10.1/8."high resolution color TFT display
- Full touch screen operation with customizable shortcut menu
- Echo-friendly no fan design
- Up to 33 types of ARR can be detected with optimized iSEAPTM ECG algorithm
- Water proof silicon buttons with knob control
- iMATTM SpO2 algorithm with outstanding motion resistance and low perfusion resistance performance
- 3/5/6/12 lead electrode placements with auto lead type



## im3

### Vital signs monitor



- 8" color TFT-LCD screen
- Light weight, ultra-slim and ergonomical design
- Full touch screen operation with customizable shortcut menu
- Echo friendly no fan design
- 360 visual alarm light
- Unique cable receiving carry handle
- Adaptative work modes to serve different clinical applications
- Power off data storage
- Flash disk supported
- Build in barcode scanner(optional)supports QR code
- LAN/WIFI(optional)/e-link(optional)connectivity
- Thermal recorder(optional)supported
- Bi-directional communication with MFM-CMS
- Seamlessly interact with HIS/EMR via HL7

#### Standard Parameters:

- SpO2, PR, NIBP

#### Optional parameter:

- Nellcor SpO2, SunTech NIBP, Quick Temp, Infrared Ear Temp

## iT20

### Telemetry System



- Lightweight(<140g) and compact design
- Built in WIFI module
- OLED display
- Ipx7 waterproof level
- AA battery power supply with 20 seconds hot-swapping
- Nurse call and call patient function
- Smart lead map and auto lead identification

#### Standard Parameters:

- 3/5-lead ECG, HR, RR( not available in the US)

#### Optional Parameters:

- SPO2, PR

## MFM-CMS

### Central Monitoring System



- Centralized monitoring and data management for patients.
- Dual-screen display supported
- User-friendly UI design and optimized workflow
- Batch management o alarm settling for all monitors
- State window on the bottom shows network condition and alarm level
- Monitoring data statistics and analysis
- Drug dose / Hemodynamics / Oxgenation / Renal function / Ventilation calculation
- Remote patient information management and NIBP monitoring
- Time synchronization available
- Call patient in case of an emergency (for iT20 only)
- Quick event review for all online patients
- LAN/WLAN connection with EDAN's monitors
- Web viewer via PC/Tablet/Smart phone
- Support HL7/XML connection to HIS

# iM8/iM8A/iM8B

Multi-parameter patient monitor



- 12.1"/10.4"/10.1" color TFT-LCD screen
- Echo-friendly no fan design
- Multi-display modes suitable for different applications
- Electrosurgical interference proof and defibrillation protection
- Powerful data storage capacity through USB flash disk
- Built-in rechargeable Li-ion battery
- Optional VGA output
- Nurse call function
- LAN/Wi-Fi (optional) connectivity
- Bi-directional communication with MFM-CMS
- Seamlessly interact with HIS/EMR via HL7
- Complete and flexible mounting solutions

**Standard Parameters:**

- 3/5-lead ECG, SpO2,RESP,NIBP,2-TEMP,PR

**Optional Parameters:**

- 2-IBP(ICP), EDAN G2 CO2 (sidestream), Respiration CO2 (sidestream/mainstream)



# H100B/H100N

## Handheld pulse oximeter

- Dual working modes: monitoring and spot check, numeric display with plethysmogram display
- Trend review and pulse-tone modulation (pitch tone), nellcor oximax, inside (h100n only)
- Adjustable audio and visual alarms, powerful data storage capacity (up to 300 hours)
- Patientcare viewer software for pc data management, convenient aa size batteries for up to 48 hours of work
- Optional battery charger stand, automatic power-off function for power saving
- Measuring parameters: spO2, pr

**Display Type :** LCD



**EDAN-H10**

**KELING**

# EDAN-H10 & KELING

## Finger Tip Pulse Oximeter

- Dual color OLED display
- Compact and power economic design
- Numeric display with plethysmogram display
- 4-direction display with 6 display modes
- Single button operation
- Low battery indicator and adjustable
- 10 level brightness
- Standard AAA batteries (2pcs)

**Measuring Parameters:**

- SpO2,PR

## SE-18/15/12/9

### ECG system

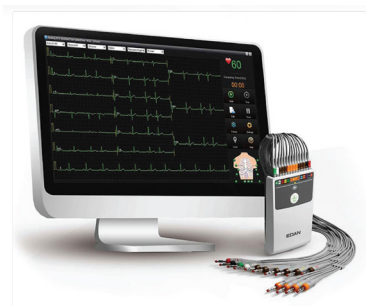


The flagship **ECG SE-18** is a professional ECG system, delivering advanced functions and reliable interpretation to increase clinicians' productivity. It supports standard 12-lead ECG and extensional ECG examination of 15/18 leads with additional pluggable leadwires. With built-in DICOM and HL7 gateway, clinicians can improve workflow by wirelessly connecting SE-18 with EMR system.

- Support 15/18-lead real-time sampling and analyzing, which is specialized for accurate Myocardial Ischemia/Infarction diagnosis
- 15" color touch screen and water-proof alphanumeric keyboard make each necessary operation faster
- Acquisition up to 30 minutes, which allows clinician to review and select the best typical waveform to analyze and print
- Wireless capability allows report to be sent to the EMR/HIS/PACs anytime, anywhere
- Authoritative Glasgow algorithm provides reliable diagnosis

## SE-1515

### Workstation



Working as a data management station as well as a gateway, SE-1515 connects ECG devices and upper systems together on a bi-directional basis, including ECG report and patient worklist assignment. Multiple remote users may also log in with assigned ID and corresponding authorities.

- Intuitive interfaces and user-friendly design
- Resting ECG/stress ECG/Holter ECG report management
- Multi-format report: PDF/XML/SCP/DICOM
- User defined report structure
- Massive data sharing and management solution
- Electronic signature on ECG reports
- Data backup and restore
- Billing statistics analysis
- HL7/DICOM protocol with worklist support
- ECG device time synchronization

## SE-1202

### Twelve channel ECG



SE-1202 is the new flagship 12-channel ECG that empowered by EDAN cutting-edge technology. The streamlined workflow and intuitive tools helps clinicians make fast and accurate diagnosis. With built-in bi-directional DICOM communication module, SE-1202 always embraces connectivity to offer a hassle-free experience.

- 10" High resolution color touch screen
- Glass touch panel supports liquid cleaning
- Complete digital filters, resisting baseline drift, AC and EMG interface
- 80000Hz sampling rate for pacemaker detection
- Color-coded Signal Quality Indication
- Acquisition up to 30 minutes, which allows clinician to review and select the best typical waveform to analyze and print
- Wireless capability allows report to be sent to the EMR/HIS/PACs anytime, anywhere
- Authoritative Glasgow algorithm provides reliable diagnosis
- 1000 ECG recording storage capacity
- Extend printing once arrhythmia is detected
- Support laser printer via USB port



## SE-12

### Express Twelve-channel ECG

- 12.1" color touch-screen
- Color-coded Signal Quality indication
- 800 ECG recordings storage capacity
- Extend printing once arrhythmia is detected
- Support laser printer via USB port
- Glasgow ECG Interpretation

#### Optional

- Stress ECG function
- PC-based data management software (SE-1515 Data Management System)
- Advanced analysis: Vector ECG



## SE-1200

### Express Twelve channel ECG

- 8" high resolution color touch-screen
- Color-coded Signal Quality Indication
- 800 ECG recordings storage capacity
- Extend printing once arrhythmia is detected
- Support laser printer via USB port
- Glasgow ECG Interpretation

#### Optional

- PC-based data management software (SE-1515 Data Management System)
- Advanced analysis: Vector ECG



**AEONMED**  
Reliable Quality Thoughtful Service

## Aeon8700A

### Anesthesia Machine

- The compression ventilation models including PCV-VG, SIMV-PC, provide more flexibility to ventilation strategy , suitable for various patients operation including pediatric and adult.
- Advanced ventilation management, provides accurate delivery and broad of setting enabling effective care across a wide range of patient sizes and acuity types.
- Support both low-flow aesthesia and mini-flow anaesthesia.
- Compact breathing system, easy to remove and clean, fully autoclavable, optional CO2 bypass
- Electric flow-meter, precise control and convenient operation
- 12.1" TFT LCD with color touch screen, highlighted display
- Optional comprehensive gas monitoring include: oxygen(paramagnetic), carbon dioxide, AG, etc.
- CE marked, meets EU clinical requirement.



## Aeon8300A

### Anesthesia Machine

- Compact, space-saving design, convenient mobility
  - PCV and SIMV+PS modes ensure flexibility in ventilation, suitable for both pediatric and adult operation
  - Flowmeter provides minimum 25% concentration of oxygen in O<sub>2</sub>/N<sub>2</sub>O mixture
  - Compact breathing system, easily to remove and clean, fully autoclavable
  - Optional functions monitoring, CO<sub>2</sub> and anesthetic gas
- With CE certificate, meets EU clinical requirement.

## Aeon 7200A

### Full Configuration

- Large LCD screen, various monitoring waveform and parameters in different colors
- IPP, Pressure mode, SIMV modes can easily meet the ventilation requirement
- 6-tube of flow meter for 3-gas source suitable for various operation requirements
- Spirometry loops, for easier interpretation of ventilation effectiveness
- Optional AGSS provides more protection
- Optional multi-gas monitoring
- With CE certificate, meets EU clinical safety requirement



## Aeon 7200A

### Basic Configuration

- Large LCD screen, various monitoring waveform and parameters in different colors
- IPPV, Pressure mode, SIMV mode can easily meet the ventilation requirement
- Integrated CO<sub>2</sub>, absorption system equipped with NO WATER VAPOR CONDENSATION sensor and fast-release APL valve
- 4-tube of flow meters for 2-gas sources meet long operation requirement
- Optional AGSS provides more protection
- Optional multi-gas functioning
- With CE certificate, meets EU clinical safety requirement





## Shangrila 590P Ventilator

- Pneumatically driven and electronically controlled for pediatric and adult
- Meet demand of critical care and mechanical ventilation
- Typically ventilation modes with BIVENT and PRVC
- User friendly design with 12.1 inch TFT touch screen
- Comprehensive clinical support including manual interventions and lung mechanics monitoring
- Easy removable, heated and autoclavable exhalation valve with built-in flow sensor, low maintenance cost

## Shangrila 510S Transportable Ventilator

- CE marked, meets clinical requirement of EU standard
- Pneumatically driven, electronically controlled
- Comprehensive ventilation functions of emergency treatment, ambulance and intra-hospital transport
- Upgraded to add ET/CO2 function
- Comprehensive lung mechanics monitoring
- Minimum tidal volume of 20ml in VCV mode
- 72hours trend with 30 seconds resolution
- Versatile ventilation modes (pressure controlled, volume controlled, pressure support, CPAP)
- Synchronized ventilation with apnea backup
- Multiple power supply solution with large capacity batteries.



## Aeonmed VG70 Mechanical Ventilator

- State-of-the-Art turbine technology.
- Ultra-quiet turbine technology .
- Lifetime over 30,000 hours An optimal combination of Invasive & Non-invasive ventilation Advance ventilation modes including BIVENT & PRVC 12" TFT detachable touch color screen, user-friendly layout.
- Flexible device configuration: can be equipped on a trolley, bed or ceiling pendant.
- Durable integrated metal exhalation valve can be easily detached and autoclaved.
- Built-in flow sensor, non-consumable design.
- Perfect design of gas-electric separation makes ventilator more safe and reliable for the patient.



## CM350B/CM350C

### Electrosurgical Unit

- Remote fault diagnosis function.
- Full-function power automatic compensation.
- Automatic monitoring function and mistake indication function.
- High definition large LED indication, with audio & visual indication.
- The standard endoscopic interface complies with any brand endoscopies.
- Power-off protection circuit, which remembers the last time output setting value.
- The auto bipolar function has a 100Q automatic stop function and does not adhere.
- Can connect with two independent hand switches for simultaneous operation by two doctors.
- Underwater cut function, suitable for use with argon system, endoscope, ureteroscope, etc including an organic cut in the rich fat area.
- Nine working modes, Monopolar output controlled by a hand switch or footswitch; bipolar output controlled by a footswitch.
- The Independent output interface ensured that only the opened interface can give output, another closed interface has no output, which is safer.
- With a high-performance neutral electrode contact inspection system, the system will test and evaluate the effective contact area between electrode and derma, if the contact area was found low to a danger level, the system will automatically cut out and gives an alarm indication.
- Optional hand switch controlled power output (increase or decrease) function



## DM7000

### DEFIBRILLATOR

DM7000 is a defibrillation device, which can meet your clinical needs from Basic Life Support (BLS) to Advanced Cardiac Life Support (ACLS).

Display Screen Type: High-resolution display  
Screen Size: 7 inches(17.7 cm) diagonally Sweep

Speed: 25mm/sec Information: Heart Rate, Lead/Pads, Alarm On/Off, SpO2, AED Functions and Prompts, Alarm Selection and Limits, Delivered Energy.



## CPAP, BiPAP & AUTO-CPAP

### Ventilator



1. 3.5inch color screen provides user with extremely clear and fast operation experience as well as complete information presentation.
2. Manual Pressure Titration
3. Intelligent Drying Technology
4. Mask testing
5. Silent
6. Automatic Adjustment Intelligent+comfortable
7. Portable

Pressure Range (cm H2O): 4-20  
Ramp Rate: 0-60

# Operating Table 3001B

## Operating table

This table is suitable for surgical procedures of the head, neck, thorax, abdomen, abdomen, perineum and extremities as well as for gynaecological, oto-rhino-laryngological and orthopaedics operation. It can be raised or lowered hydraulically by means of an oil pump. Various positions can be controlled from both side. It has been awarded the first prize in China. It has won the "High Quality Product" certificate of the State Pharmaceutical Administration Department.

**Specifications:**

Overall Length: 2100mm  
 Width: 480mm  
 Head Section: 280×320mm  
 Back Section: 500×480mm  
 Seat section: 450×480mm  
 Leg Section: 450×480mm  
 Foot Section: 200×533mm  
 Kidney Bridge: 85×415mm  
 Max Height: 920mm  
 Min Height: 720mm  
 Safe Working Load: 150kg

**Standard Accessories:**

Anaesthetic Screen\*1  
 Body support Large\*1, small\*1  
 Shoulder support\*2  
 Arm rest\*2  
 Knee crutch\*2  
 Cushion \*1



# Operating Table 3008C

## Operating table

This table is suitable for surgical procedures of the head, neck, thorax, abdomen, abdomen, perineum and extremities as well as for gynaecological, oto-rhino-laryngological and orthopaedics operation. It can be raised or lowered hydraulically by means of an oil pump. Various positions can be controlled from both side. It has been awarded the first prize in China. It has won the "High Quality Product" certificate of the State Pharmaceutical Administration Department.

**TECHNICAL SPECIFICATION:**

length: 2050±50mm  
 Width: 480±20mm  
 height: (750-950)mm ±50mm  
 forward: ≥30° backward: ≥25°  
 leftward ≥20° rightward ≥20°  
 Head board Fold upward ≥30° Fold downward ≥90°  
 Back board Fold upward ≥80° Fold downward ≥10°  
 Leg board Fold downward ≥90° Fold outward ≥90°  
 Waist board elevation ≥120mm

**PRODUCT ADVANTAGE:**

1. Base is stainless steel
2. Leg board is separated & dischargeable
3. Double-decked can do X-ray





# Electric Operating Table

## DL SERIES

Hydraulic electric operating table DL-A clinical surgery established under requirements of modern medicine. It allows you to produce a variety of options for operations in orthopedics, gynecology, urology, and in many other ways. Operating table consists of a main body, an electric control unit and accessories. The table can be smoothly lowered, raised and tilted thanks to modern hydraulic technology.

Prior to the main part of the elements are: to support the head, lumbar support, seat, support legs and backboard. Elements to support the head and the legs can be detached. Also an element of support for the head can be raised / lowered and the element for supporting legs - lowered and folded. All components of the main parts are made of plastics, which are allowed to be used by X-ray examination.

Swivel frame of the operating table allows to perform operations in the Trendelenburg position, tilt, raise and lower parts of the body. All settings of the table are carried out by an electrical control unit or remote control, which automatically locked to avoid transition to a desired position during operation. The table surface is made of high quality synthetic leather, which is allowed to be disinfected.

Operating table DL-A is equipped with all necessary accessories and provides comfortable holding surgeries

### TECHNICAL SPECIFICATION:

1. Base;
2. Anesthesia frame for the screen;
3. The element of support for the shoulder - 2 pcs
4. The element of support for the hands - 2 pcs
5. An element to support the body on each side - 2 pcs
6. An element for supporting legs - 2 pcs
7. The Board of Foot - 2 pcs
8. Board for feet - 2 pcs
9. Board Head - 2 pcs
10. Belt (vapor);
11. Little Belt (vapor);
12. The controller;
13. Network cable;
14. Fuse - 2 pcs;
15. Remote control

### Attributes of the operating table:

- Overall length 2000 ± 50 mm
- The width of 520 ± 20 mm
- Height 250-750 mm
- The angle of inclination of 15 ° forward
- The angle of inclination of 15 ° back
- The angle of inclination of 15 ° leftward
- The angle of 15 ° to the right
- The angle (up) for the support elements of the head 45 °
- The angle (down) elements to support the head 90 °
- The angle (up) back holder 60 °
- The angle (down) the back of the holder 30 °
- The angle of inclination of the element to support legs 90 °
- The angle of inclination for the compilation element to support the feet 180 °
- Raising element to support the waist of 80 mm



# Operating Table 3001

## Operating table

- Side control Operating Table Full Stainless Steel
- Rotary brake device which is easy for moving operating table.
- All actions are controlled on both sides.



**TECHNICAL SPECIFICATION:**

Length: 2100±50mm  
 Width: 480±20mm  
 height: (750—950)mm±50mm

# Operating Light YD200

## Cold Light Operating Lamp

This cold-light single hole deep lamp(LED) features simple structure, easy usage, good appearance and practicability, as well as distinctive performance for deep illumination.



**TECHNICAL SPECIFICATION:**

Illuminance:50,000Lux  
 Color temperature :4800±500k  
 Power supply voltage:220V/50Hz  
 Rated power of bulb :3.2V/1W  
 Bulb:LED bulb  
 Total power consumption: 50W  
 Total LED bulb quantity: 13 pcs

# LED Examination Lamp YD01

## Examination Lamp

YD01 examination lamp is extensively applied in industry, medical treatment, jewelry, photograph, scientific research etc,. It is currently more advanced lighting equipments at home and abroad.



**TECHNICAL SPECIFICATION:**

Illuminance : 20W-20,000  
 Lux 0.5m/5,000  
 Lux 1m 35W/25,000  
 Lux 0.5m/10,000  
 Lux 1m 50W/30,000  
 Lux 0.5m/20,000  
 Lux 1m  
 Color temperature :4000±200K  
 Size of light field :100mm  
 Adjust : adjust light  
 Power supply voltage :220V/50Hz  
 Rated power of bulb:12V/20W,  
 12V/35W, 12V/50W  
 Crutchadjust up/down

# YD02-9 Operating Light

## Examination Lamp

In YD02-9 Cold Light Operating Lamp adopts light sources from different positions for focus, providing illumination for surgical operations and medical examination and reducing shadows produced by different parts of medical workers. Illumination can be adjusted according to practical requirements. The lamp is fit for lighting for surgical operations and medical examination in hospitals. Equipped with professional built-in balancer, make it stable and reliable. Streamline outline has low coefficient of air damping, can be used in demanding purification operation room. Suitable illuminance and color temperature, supply premier optical performance. This product is made of premier aluminium-alloy material, the positioning of the lamp head is easier and flexible. The electrical system are separate, which increase the reliability of this lamp.



# KL LED SZ4 SERIES

## Operation Lamp

KL LED Z24 series shadowless operation lamp are suitable for the requirements of various operation conditions and it is ideal operating lighting equipment for modern operating rooms and clean operation rooms.

### TECHNICAL SPECIFICATION:

- Imported LED cold light source is adopted, with the ultrathin optical lens
- Digital means are adopted for stepless regulation of LED brightness
- Light field size can be adjusted by the handle.
- The removable handle sheath can be disinfected
- The service life of LED shadow less is long (50000h)
- The imported switch power supply is adopted to control the voltage, making the work voltage permanently stable.
- The no welding titanium alloy arm. Imported spring arm makes sure the lamp head is adjusted easily and freely



# KL09L/KL12L 9/12 - REFLECTOR

## Luminescence Shadowless Lamp

KL09L/KL12L hoisted 9/12-reflector luminescence shadowless lamp adopts light sources from different positions for focus, providing illumination for surgical operations and medical examination and reducing shadows produced by different parts of medical workers. Illumination can be adjusted according to practical requirements. The lamp is fit for lighting for surgical operations and medical examination in hospitals.

### TECHNICAL SPECIFICATION:

- Intensity of light:  $\geq 100,000lx$
- Temperature:  $4,000 \pm 500K$
- Input power: 280VA
- Power: AC220V  $\pm 10\%$  50Hz
- Rated voltage of bubble: AC24V
- Rate Power: 225W



# KL-LED STZ5

## STZ 5 series

LED Operation shadowless lamp is suitable for various operation needs, is the modern ideal surgical lighting equipment operating room, and purify the operating room.

### It owns advantages as follows:

- Color temperature is adjustable, controlled human R9 function.
- Import control voltage switch power supply, make the working voltage stable forever.
- The removable handle, facilitate cleaning and sanitation.



# KL04L Series

## Examination Lamp

KL04L LED SERIES for general outpatient surgical lighting, with brake can be easy moved.  
 KL04L. I with battery is more suitable for cutting off power.

**TECHNICAL SPECIFICATION:**

.....  
 Illumination (lux): 100000  
 Color Temperature (K): 4000±500  
 Color rendering index: 100±Ra≥85  
 Depth of light beam (mm): <6mW/m2lx  
 The value of the total irradiance(service range for temperature rise≤10°): ≤600W/m2  
 Total irradiance(Temperature rise on the head of patient under surgical operations≤2°)  
 Power supply(AC): 220V±10% 50Hz DC24V  
 Rated voltage of bulb: 24V  
 Rated power of bulb: 100W  
 Input power(VA): 120



# KL LED DT(R) SERIES

## Shadowless Operating Lamp

KL-LED Series shadowless operation lamp are suitable for the requirements of various operation conditions and it is ideal lighting equipment for modern & clean operation rooms.

**TECHNICAL SPECIFICATION/FEATURES:**

.....  
 Imported LED cold light source is adopted, with ultra thin optical lens.  
 Digital means are adopted for stepless regulation of LED brightness.  
 Light field size can be adjusted by the handles.  
 The removable handle sheath can be disinfected.  
 The service life of LED shadowless is long enough.  
 Color temp can be adjusted in three steps.  
 The imported switch power supply is adopted to control the voltage, making the work voltage permanently stable.  
 The no welding titanium alloy rim, imported spring arm make sure the lamp head adjusted easily and freely.



# KL04L SERIES

## Shadowless Lamp



# ICU/THEATRE PENDANT

## Hospital Pendant

Revolving Hospital Bridge Pendant For Surgical.

**TECHNICAL SPECIFICATION/FEATURES:**

- .....  
 1. Ceiling Mounted installed.  
 2. Friction brake + Pneumatic brake.  
 3. Provide multiple configure,make you satisfy.  
 4. Electrical up and down,precise positioning.  
 5. Surface designed by the first level oxidized rust prevention.  
 6. The suspension arm is imported by high-strength aluminum alloy extrusion.  
 7. Pendant Applicative Area: Surgical Room/ Emergency Room/ICU/ Recovery Room



## Mindray VP5 Infusion Pump



The BeneFusion VP5 is designed as a comprehensive and simple solution for clinical infusion use. With its accuracy, security feature and intuitive design, BeneFusion VP5 can be a powerful partner for intravenous infusion.

3.5" colour screen provides multiple pieces information on one page

Intelligent occlusion management system - Dynamic pressure system & anti-bolus

Up to 6 infusion modes, applicable for any clinical use

## Mindray SP5 Syrange Pump

The BeneFusion SP5 has been designed to facilitate comprehensive solution for clinical use, with its accuracy, safety feature and intuitive design, BeneFusion SP5 is capable to be a powerful partner for intravenous infusion

- 3.5" Color Screen provide multi information on one page
- Intelligent occlusion management system-dynamic Pressure System and Anti-bolus
- Fast start function ensure effective medication on time
- Up to 6 infusion modes, satisfy all clinical use



## DFX -23CIII Suction Unit

DFX-23C-III electrical suction devices are new style mobile suction devices.They are devices for medical use designed for operations of gynecology in hospitals for taking out pus, blood, sputum and other thick liquid in human body.

- The device is equipped with a imported membrane pump available with long service life.
- This device has low noise and is maintenance-free.
- This device is equipped with an overflow protection unit to prevent liquid from getting into pump body.
- It's equipped with the hand-operated switch and footstep-operated switch.



## DFX 23C D Suction Unit

DFX-23C-V electrical suction units are new style mobile suction devices. They are devices for medical use designed for operations of gynecology in hospitals for taking out pus, blood, sputum and other thick liquid in human body.

- 23C-V All-plastic ABS enclosure that is formed in one piece is adopted.
- The device is equipped with a imported membrane pump available with long service life.
- This device has low noise and is maintenance-free.
- This device is equipped with an overflow protection unit to prevent liquid from getting into pump body.
- It's equipped with the hand-operated switch and footstep-operated switch.



# Manual Suction Unit

## HEMC Suction Unit

- A non-tiring, portable, pedal, light-weight unit with top view manometer visible to operator.
- Useful for field hospitals, mid-wives, medical centres, on-foot paramedics.
- Made in heavy sheet metal and pre-treated epoxy powder coated.
- Base fitted with 4 rubber feet for firm grip on ground when pumping.
- The foot pedal can be locked when not in use and during transportation.
- Supplied with plastic suction cannula.
- A carry handle fixed to the base enables easy transportation.



SUA - 737-02  
Plastic Suction Cannula

# Nebulizer

## Nivec III

The Nivec III is available in single pump or double pump version offering low flow/high vacuum and high flow/high vacuum



# Nebulizer

## Keling Nebulizer Machine



# Sam 12

## Suction Unit

Vacuum 0 to 0.85bar  
Flow rate 30l/min



# SU-703

## HEMC Suction Unit

- A versatile trolley model on 4 swivel castors suitable for general suction procedures.
- Main body constructed from M.S. sheet with S.S. top, fitted with Push Handle.
- D.C. outlet socket on side for connecting foot pedal\* (\*Optional – Not included).
- Fitted with Vacuum Gauge, ON/OFF Switch cum indicator, Vacuum Control Knob.
- Overflow cut-off device fitted in one bottle.
- Supplied with patient suction tube with plastic tip and electric lead.



SUA - 737-02  
Plastic Suction Cannula



## Sam 35 Suction Unit

Vacuum 0 to 0.9 bar/0 to 675mmHg  
Flow rate 50l/min

The SAM 35 aspirator is a top quality surgical suction unit providing high flow, high vacuum performance. The unit is designed primarily for major operating theatre use and can also be used in lipo-suction procedures. Its reputation for reliability and ease of operation has established it among the most widely used units in the medical world today.

## Sam 14 Suction Unit

Vacuum 0 to 0.85 bar  
Flow rate 30 l/min



## Sam 18 Suction Unit

Vacuum 0 to 0.2 bar/  
0 to 150mmHg  
Flow rate 5 l/min



## Sam 15/16 Suction Unit

Vacuum 0 to 0.85 bar  
Flow rate 30 l/min



## Sam Hospy Suction Unit



## Sam EPS Suction Unit

Vacuum 0 to 0.8 / 0 to 600mmHg  
Flow rate 32l/min  
Battery back up 120 mins on full power



## Sam 420 Suction Unit



# Sam 420LX

Suction Unit



# Sam 50

Central Pipeline System



# Oxygen Set

Flowmeter | Regulator | Humidifier bottle





# Diagnosics & Lab *Equipment*

- Lab Machines
- Diagnostic Equipment
- UltraSound & UltraSonic Equipment



## i15

### Blood Gas and Chemistry Analysis System

- As a brand new POCT device specially designed for critical cares, it enables you to more quickly and effectively monitor and manage your patients.
- Small size and light weight battery with built-in rechargeable battery
- 3-Step operation procedure to increase efficiency
- Complete maintenance free
- Standby at any time without reagent consumption
- Auto sample aspiration and calibration to ensure accuracy and reliability
- Seamless integration with LIS/HIS through wired and wireless networking
- 10000 patient data storage and USB data transfer
- Flexible tests combination on single cartridge
- User-friendly interface with color LCD touch screen and "traffic light" indicator
- Build-in multimedia tutorials



## M16

### Magnetic Immunoassay Analysis System

- Innovative micro-array sensor and micro-fluidic technology
- Flexible menu on single cartridge
- High sensitivity and accuracy
- Imbedded/dedicated sensor for real-time calibration
- Advanced Magnetic bead-Linked GMR biosensor improves precision and accuracy
- Zero maintenance
- Capable of running various sample types: whole blood, plasma, serum
- 50ul sample volume for multi-parameter cartridge
- Test report in 15 mins



## H50

### 5-Part Hematology Analyzer

- H50, the much updated 5-part hematology analyzer with the state of art technology, simple operations, fewer reagents, better performance, advance internal structure by design.
- 25 reportable parameters and 4 research parameters with 3 histograms and 1 scattergram
- Throughput: 60 samples per hour
- High efficiency on reagents with only 3 routine reagents
- Low reagent consumption
- Intelligent internal structure design that requires minimum maintenance
- 35000 files including demographics, results and histograms, 12 QC files (100 data per file)
- Small footprint with embedded reagent design allowing for more working space



## H30 3-Part Hematology Analyzer

H30 has the compact size, and the uncompromising capability of running 60 tests per hour smoothly and noiselessly with just 9.6ul blood sample each time and 20 reportable parameters. With low reagent consumption, exquisite appearance and good performance, H30 is believed to be a helpful tool in clinical laboratories.

- Fully automated, 3-part differentiation of WBC
- 20 parameters and 3 histograms for WBC, RBC and PLT
- 10.4" TFT color and touch screen
- 35000 files including demographics, results and histograms, 12QC files
- Integrated thermal printer and external barcode scanner
- PCL3 inkjet printer and PCL6 laser printer supported



## DS-500/DS-500i 5-Part Hematology Analyzer

DS-500 can be easily upgraded to DS-500i with a capacity of 60 samples autoloader to increase the efficiency.

- Complete menu with 27 parameters, 2 scattergrams and 2 histograms
- High technology to ensure excellent analysis performance
- Adaptive Flexible Contour Classification Technology to ensure analysis accuracy
- 10ul of blood sample needed + 2 sampling modes
- Dual operating system to increase efficiency and convenience
- Unlimited sample data storage
- Comprehensive self-maintenance and alarm function
- One-key click to remove errors
- Quick browser for autoloader & batch check (DS-500i)
- Large capacity sample autoloader can support up to 60 sample tubes at a time (DS-500i)
- Economical test running with only two routine reagents



## CT3 Colloidal Gold-labeled Immunoassay Analysis

Immunoassay is a critical factor in determining your healthcare needs. Medical decisions are taken on basis of information provided by immunoassay. They help guide clinical decisions on what treatment or intervention will be most appropriate. The CT3, a POCT lateral flow immunoassay analyzer can provide high quality, efficient, timely immunoassay testing to the healthcare community at a reasonable cost.

- Supports both qualitative and quantitative test results
- Capable of running various sample types
- Multi popular parameters come in one cartridge
- High sensitivity and accuracy with wide linearity range
- Room temperature storage with long shelf life
- Zero maintenance
- Supports HIS/LIS connection
- Acquire and store up to 100000 patient data storage via barcode/QR code
- The intuitive touch screen user interface streamlines workflow for fast results
- The low power consumption Intel Bay- Trial CPU provides test report in 5 seconds



# Acclarix LX3

## Diagnostic Ultrasound System

### The Virtue of Value

Delivers unmatched value and performance across a broad range of applications such as abdomen, cardiac screening, small parts, OB/GYN, vascular, MSK, difficult-to-image, breast and nerve

### Stunning Clarity

High fidelity, high channel count architecture results in superb detail resolution, particularly at high depth along with multiple imaging processing technologies allows for a perfect display of ultrasound image in differences modes for a more precise diagnosis.

### TAI Technology

Tissue Adaptive Imaging (TAI) continuously and automatically optimizes imaging allowing more focus on the patient  
 In B-mode, TAI fine tunes multiple parameters to provide the best possible image quality In Doppler, TAI automatically adjusts for flow state, providing improved continuity, border detection and filling of color

### Distinctive design

Several features have been cultivated for the ultimate experience including customisable touch screen user panel, gel warmer, and 5 active transducer ports to maximise clinical application.



#### Features

- Works across a broad range of applications
- Display ultrasound image in different modes
- Tissue Adaptive Imaging (TAI) technique
- More precise diagnosis
- Offers transducers with outstanding quality and reliability (2 will be provided)

# Infusion Pump

## Biolight P600

#### Highlights:

- 4.2 inch high definition LCD color screen.
- Double infusion mode option and display( drip rate and volumetric).
- Real-time self check during startup and infusion process.
- Bolus and quick drainage function cut infusion and drainage time.
- Anti-bolus function with three gradings(H,M,L).
- Ultrasonic air-in-line detection
- 9 kinds Audio-visual alarm insure further safety
- Audio prompt function for unconventional infusion speed guarantee error free operation.
- Real time display total infused volume, easy for clinical observation.
- Automatically switch to KVO rate operation upon preset volume is completed.
- Memory of last running parameters even under power off.
- Automatically switch among ml/h, drop/min and time-based.
- Change flow rate without stopping the pump.
- Built-in thermostat: 30-45°C, temperature adjustable Key locker
- Extensive flow rate range, 0.1-1500 ml/h, in0.1 ml/h increments.
- Rechargeable Ni-MH battery keep machine above 5 hours running under 30 mL/h Life span up to above 5 years
- IPX3, Class II, Type CF



# Syringe Pump

Biolight P500



#### Highlights:

- 2.4 inch LCD display
- 4 kinds of injection mode, easy, flow rate, time-based, body weight.
- Built-in 20 kinds of syringe brand (5 international) and support two custom syringe.
- Applicable to various standard syringe 10, 20, 30, 50 /60 ml, and syringe size automatic identification.
- Anti-bolus function with three gradings(M.M.L).
- 12 kinds Audio-Visual alarm insure further safety.
- Automatically transfer to KVO speed operation upon preset goal is completed.
- Real time display total injection volume, easy for clinical observation.
- Extensive injection rate range, from 0.1ml to 1300 ml/h, in 0.1ml/h increments.
- Easy input by keyboard or shuttle key.
- Rechargeable Ni-MH battery keep machine above 5 hours running under 5 mL.
- Memory of last running parameters even under power off.
- Stackable for multiple channels.
- Drug Library is available, 45 kinds of Medicines selectable

# 2 Channel Syringe pump

Biolight P550



#### Highlights:

- 3.2 inch color LCD display - Individually show for corresponding channel.
- Night key | Press at any time to enter night mode to save power and protect eye from strong light especially at night.
- Menu key | Wherever sub-menu goes, directly come back main menu by pressing this key.
- Shuttle key | Quickly reach intended numbers to save time.
- Syringe hook | Working together with pressure sensor.
- Syringe plate | Detector inside automatically check the volume of syringe pinched in and show corresponding size at left with lamp on.
- IPX4 waterproof cloth | Anti-slip feet.
- Purge | Continuously press two time enter bolus or quick drainage function.
- Flow rate | Flow rate in each channel are showed respectively more directly and easy for data collection.

# Acclarix LX8

## Diagnostic Ultrasound System

**Distinctive Design**

- 21" tilt-and-swivel HD, wide-screen, antiglare LCD monitor
- Four Active transducer ports
- Down-tilt, pull out keyboard for flexible annotation and data entry
- Four-wheel pivot for easy maneuverability

**Definitive Image Quality**

- High-fidelity, high channel count architecture
- Tissue Adaptive Imaging (TAI) continuously and automatically optimizes imaging to allow more focus on the patient
- B-mode: TAI fine tunes multiple parameters for optical imaging
- Doppler: TAI adjusts for flow state providing improved continuity, border detection and fill-in

**Intelligent Workflow**

- Customizable-gesture control touch screen to personalize workflow
- One-touch auto optimization for all modes
- Comprehensive suite of 3D/4D rendering and editing tools
- Connectivity: DICOM, USB, DVD, E THERNET, Video out, PDF, AVI and BMP file export



# Acclarix AX2

## Diagnostic Ultrasound System

**Distinctive Design**

- 15" wide angle HD monitor in 180 degrees rotation
- Two removable built-in Lithium-ion battery providing ultra-long continuous scanning
- Magnesium alloy body with unexpected light-weight about 4.5 Kg
- Integrated trolley with semi-automatic height adjustment

**Definitive Image Quality**

- High fidelity, high channel count architecture
- Tissue Adaptive Imaging (TAI) continuously and automatically optimizes imaging to allow more focus on the patient
- B-mode: TAI fine tunes multiple parameters for optical imaging
- Doppler: TAI adjusts for flow state providing improved continuity, border detection and fill-in

**Intelligent Workflow**

- Customizable gesture-control 10" touch screen to personalize workflow
- One touch auto optimization for all modes
- Smart EIS platform empowering efficient diagnosis with mighty inner core



# Acclarix AX3

## Diagnostic Ultrasound System

**Distinctive Design**

- 15" wide angle HD monitor 180 degrees rotation
- Humanized dual-sockets design
- Two removable built-in lithium-ion battery providing ultra-long continuous scanning
- Magnesium alloy body with unexpected light weight about 4.5 Kg
- Integrated trolley with semi-automatic height adjustment

**Definitive Image Quality**

- High fidelity, high channel count architecture
- Tissue Adaptive Imaging (TAI) continuously and automatically optimizes imaging to allow more focus on the patient
- B-mode: TAI fine tunes multiple parameters for optical imaging
- Doppler: TAI adjusts for flow state providing improved continuity, border detection and fill-in

**Intelligent Workflow**

- Customizable gesture-control 10" touch screen to personalize workflow
- One touch auto optimization for all modes
- Smart EIS platform empowering efficient diagnosis with mighty inner core



## Acclarix LX9

### Diagnostic Ultrasound System

#### Distinctive Design

- Tilting and swivelling 21.5" HD LCD medical monitor
- 14" tilting gesture-powered touch screen
- 180 degrees rotation of control panel and electronic height fixing
- Super slim body design in light weight
- Five transducers sockets ideal for GI
- Dual built-in batteries support ultra-long continuous scanning

#### Definitive Image Quality

- eTail (Tissue Adaptive Imaging)
- eStr (Sparkle Reduction & Edge Enhancement Imaging)
- eView (Adaptive Spatial Compound Imaging & Frequency Compound Imaging)
- eBeam (Digital Multi-Beam Beamforming)
- ePH (Pulse Inversion Harmonic Imaging)

#### Intelligent Workflow

- Customizable gesture-control touch screen to personalize workflow
- One-touch auto optimization for all modes
- Comprehensive suite of 3D/4D rendering and editing tools



## Acclarix LX4

### Diagnostic Ultrasound System

#### Distinctive Design

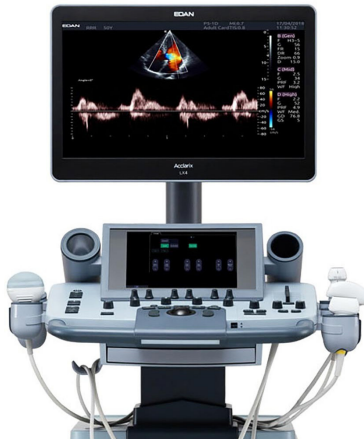
- 21" tilt and swivel HD, wide screen, antiglare LCD monitor
- Four active transducer ports
- Down-tilt, pull out keyboard for flexible annotation and data entry
- Four-wheel pivot for easy maneuverability

#### Definitive Image Quality

- High fidelity, high channel count architecture
- Tissue Adaptive Imaging (TAI) continuously and automatically optimizes imaging to allow more focus on the patient
- B-mode: TAI fine tunes multiple parameters for optical imaging
- Doppler: TAI adjusts for flow state providing improved continuity, border detection and fill-in

#### Intelligent Workflow

- Customizable-gesture control touch screen to personalize workflow
- One-touch auto optimization for all modes
- Comprehensive suite of 3D/4D rendering and editing tools
- Connectivity: DICOM, USB, DVD, E THERNET, Video out, PDF, AVI and BMP file export



## Acclarix AX4

### Diagnostic Ultrasound System

#### Distinctive Design

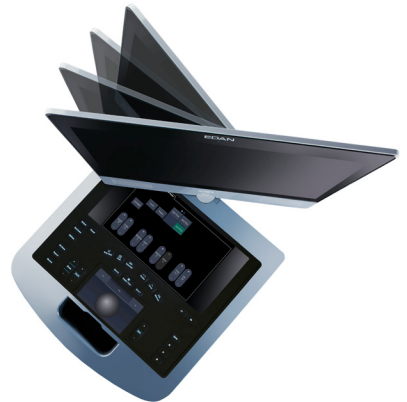
- 21" tilt and swivel HD, wide screen, antiglare LCD monitor
- Four active transducer ports
- Down-tilt, pull out keyboard for flexible annotation and data entry
- Four-wheel pivot for easy maneuverability

#### Definitive Image Quality

- High fidelity, high channel count architecture
- Tissue Adaptive Imaging (TAI) continuously and automatically optimizes imaging to allow more focus on the patient
- B-mode: TAI fine tunes multiple parameters for optical imaging
- Doppler: TAI adjusts for flow state providing improved continuity, border detection and fill-in

#### Intelligent Workflow

- Customizable-gesture control touch screen to personalize workflow
- One-touch auto optimization for all modes
- Comprehensive suite of 3D/4D rendering and editing tools
- Connectivity: DICOM, USB, DVD, E THERNET, Video out, PDF, AVI and BMP file export



## U60 Diagnostic Ultrasound System

### Compact Design

- 15" high resolution LCD screen
- Compact and lightweight design facility mobility
- Built-in battery enables flexible imaging
- Large capacity data storage

### User-friendly Workflow

- Backlit, easy-to-use control panel
- User defined keys to customize workflow

### Advanced Imaging Technology

- Tissue Harmonic Imaging
- Spatial Compounding Imaging
- Speckle Reduction Imaging
- Multi-Beam Technology

### Comprehensive Clinical Application

- The U60 Diagnostic Ultrasound System provides Superb value and excellent imaging quality.



## U2 Diagnostic Ultrasound System

### Ergonomics Design

- 12.1" High resolution LCD screen (19" optional)
- Four active transducer ports
- Four-wheel pivot for easy maneuverability
- Easy archiving of patient images using DICOM file storage
- Rapid one button touch save and export of reports as .pdf

### Abdomen and OB/GYN

- State-of-the-art C5-2B transducer with superb penetration and resolution
- High quality spectral Doppler with HPRF for high-velocity flow

### Small Parts and Musculoskeletal

- High-frequency L15-7B transducer with excellent contrasts and detail resolution for superficial imaging
- High quality spectral Doppler with excellent sensitivity to capture low velocity flow

### Cardiac Screening Capability

- Phased-array P5-1B transducer excellent image quality
- CW Doppler capability with excellent sensitivity to identify high-velocity jets



## U50 Diagnostic Ultrasound System

Image more patients, across more applications, with more confidence.

### Ergonomics Design

- 12.1" High resolution LCD screen (19" optional)
- Four active transducer ports
- Four-wheel pivot for easy maneuverability
- Easy archiving of patient images using DICOM file storage
- Rapid one button touch save and export of reports as .pdf

### Abdomen and OB/GYN

- State-of-the-art C5-2B transducer with superb penetration and resolution
- High quality spectral Doppler with HPRF for high-velocity flow

### Small Parts and Musculoskeletal

- High-frequency L15-7B transducer with excellent contrasts and detail resolution for superficial imaging
- High quality spectral Doppler with excellent sensitivity to capture low velocity flow

### Cardiac Screening Capability

- Phased-array P5-1B transducer excellent image quality
- CW Doppler capability with excellent sensitivity to identify high-velocity jets





## DUS60

### Diagnostic Ultrasound System

#### FEATURES

- 12.1" TFT-LCD screen
- Weight 7.1 Kg
- Two transducer connectors
- Multi-frequency transducer technology
- Pulsed wave Doppler
- Multi-beam technology
- Harmonic imaging
- Speckle reduction technology
- Synthetically receive aperture technology
- Image processing (IP) function
- 256-frame cine loop memory
- Multi-language function
- Two USB ports
- Built-in rechargeable Li-ion battery (optical)
- DICOM 3.0 (Optional)
- Large capacity data storage (Optional)
- Footswitch (Optional)
- Mobile trolley (Optional)
- Carrying case (Optional)
- Needle-guide brackets (Optional)



## Omron M2

### Blood Pressure Monitor

Omron M2 blood pressure monitor features Intellisense technology, which ensures that the arm cuff reaches the correct inflation and doesn't pump up too high. It is easy to use, and its fully automatic upper arm blood pressure monitor gives you comfortable, quick, and accurate blood pressure monitoring.



## Electronic BP

### Blood Pressure Monitor



## BK6002

### Automatic Digital Blood Pressure monitor

Range 0-300mmHg (pressure) 40-200 Pulse/min (Pulse)  
Date Memory 21sets (Blood Pressure/Pulse/Date/Time)  
Accuracy +/-3mmHg, +/-0.4kPa +/-5% (Pulse)

#### Pressurization Intelligent Automatic

Pressurization Depressurization Automatic Constant Speed  
Exhaust Pressure Detection  
Pressure sensor  
Power supply 4 batteries (4xAA)



## Mercury Sphygmomanometer



## Aneroid Sphygmomanometer



## Wall Mount Sphygmomanometer



## Single Head Stethoscope



## Dual Head Stethoscope



## Littmann Stethoscope



## Digital Thermometer



## Infrared Thermometer



## Keling/Rhein - 023 Diagnostic Set



## Lung Exerciser Spirometer



## Laryngoscope Set Macintosh Blades - RH061



## Laryngoscope Set Fibre optic



# Maternal Care *Equipment*

- *Child Support Equipment*
- *Mother & Child*
- *Gynaecare Equipment*





## SD3 Series

### Ultrasonic Pocket Doppler

With excellent sensitivity, complete interchangeability and high durability, SD3 Series Ultrasonic Pocket Doppler are ideal routine fetal heart detection by the clinicians.

- 2 MHz probe with deep penetration for later pregnancy and larger patients
- 3 MHz probe detects fetal heart beat as early as 9 weeks
- 4/5/8 MHz probe for blood flow detection
- Compact design with easy one-hand operation
- Plug-and-play
- Bright OLED screen with real-time FHR display
- Real-time monitoring for daily use
- Record and play with audio playback and numeric display
- Automatic power-off while putting the probe back to the rack (SD3 PLUS & SD3 PRO)
- Normal AA batteries for easy replacement
- Built-in Li-ion rechargeable battery ensures long working time
- Unique charger stand design

## F9 Series

### Fetal & Maternal Monitor

- 12-crystal broad beam waterproof FHR transducer
- 12.1" high resolution, color TFT-LCD touch screen
- Fetal and maternal monitoring parameters both available
- Signals overlap verification to separate twins FHR from MHR
- Professional CTG analysis system
- Compatible with 150/152 mm universal recording paper
- 60 hours waveform storage and playback
- Fast printing of stored traces
- Telemetry Transducer System Compatibility

#### Standard Configuration

Twins FHR, TOCO, MFM, AFM, CTG analysis, Li-on Battery

#### Optional Configuration

MECG, HR/PR/NBP, SpO<sub>2</sub>, TEMP, DECG & IUP, Fetal Stimulator, Touch Screen, Telemetry Transducer System



## Full Solution

### With FTS-3

- Unique twins FHR monitoring
- Highly sensitive 12-crystal FHR probe
- Dual color OLED display
- Automatically probe identification
- Great freedom of movement for the patient
- Cordless and waterproof probe for water delivery
- Long lasting rechargeable battery for the probe and base station
- Base station with built-in antenna
- Compatible with F6/F9/F9 Express

#### Standard Configuration

FHR, TOCO, AFM, Li-on Battery

#### Optional Configuration

Twins FHR, MEGG/DEGG



## F6 Series

### Fetal & Maternal Monitor

- Highly sensitive 1MHz waterproof FHR transducer
- 10.1" foldable, color TFT, LCD screen
- Display waveforms and digitals simultaneously
- Signals overlap verification to separate twins FHR
- Professional CTG analysis system
- Built-in life long thermal printer
- Compatible with 150/152 mm universal recording paper
- Compatible with American/International recording paper
- 60 hours waveform storage and playback
- Fast printing of stored traces
- Wired and wireless central monitoring solution
- Telemetry Transducer System Compatibility



#### Standard Configuration

FHR, TOCO, MFM, AFM, Li-on Battery

#### Optional Configuration

Twins FHR, DEGG & IUP, CTG Analysis, Fetal Stimulator

## F2/F3 Series

### Fetal Monitor

With its brand new design, foldable screen and enhanced functionality, addresses the needs of obstetrical departments in offices, clinics and hospitals.

- 5.6" foldable screen
- Large numeric and graphic display for ease of readability
- Signals overlap verification to separate twins FHR
- Convenient probe rack and compact design
- 60 hours back up memory for seamless monitoring
- USB port enables memory expansion
- Built-in long life thermal printer
- Compatible with 150/152 mm thermal recording paper
- Fast printing of stored traces
- Long life Li-on Battery guarantees the mobility
- Wired and wireless central monitoring solution

**Standard Configuration**  
FHR, TOCO, MFM, AFM, Li-on Battery

**Optional Configuration**  
Twins FHR, DEGG, & IUP, CTG Analysis, Fetal Stimulator



## BB-100 Standard

### Neonatal incubator

Microprocessor based servo controlled temperature system Control mode: Air mode Humidity is adjustable in two grades Set temperature, air temperature, heating power are displayed separately by LED Self - testing function, various failure alarms by audible and visual Alarm.

**Functions:**

Power failure, Over temperature, Temperature deviation, Fan failure, Temperature sensor failure >37°C temperature set function Triple protection for over temperature with separate cut off device, more safety system The inclination of infant bed is adjustable Single wall hood, 4 operating windows and 2 iris ports, 3 infusion seats RS232 connector Independent locking device for front door.



## B-100

### Infant Phototherapy Unit

STANDARD COMPOSITION:

- Use blue tube or LED as light source;
- LED Digital Timer, display therapy time & total time;
- Lifting & Mobile Stand, radiant head rotating by angle of 30° / 60° / 90°.



## SD1 Series

### Ultrasonic Pocket Doppler

Our newly innovation, the all-in-one compact handheld Doppler, SD1, is a remarkable member of Edan's ultrasound Doppler Series.

- ALL-IN-ONE design
- Built-in speaker
- Digital display of FHR
- Touch panel for easy control
- Android or IOS APP access for tracking baby's development
- 3MHz probe detects fetal heart beat
- Normal AA batteries for easy replacement
- Automatic power off for battery power saving
- Volume adjustable
- Pulse wave technology



## BB-200 Series

Luxurious | Standard | Top Grade

Microprocessor based servo controlled temperature system  
Control modes: Air mode and baby skin mode Humidity is adjustable continuously Set temperature, air temperature, baby skin temperature, timer and heating power are displayed separately by LED Self - testing.

**Function:**

Various failure alarms by audible and visual >37°C Temperature set function Triple protection for over temperature with separate cut off device, more safety system The inclination of infant bed is adjustable Single wall hood, 4 operating windows and 2 iris ports Independent locking device for front door RS232 connector, Oxygen inlet Optional function: X ray cassette Tray; baby weight system ; Electric height adjustable ; LED phototherapy unit;

## BN-100 Series

Standard | Top Grade - Infant Radiant Warmer

Microprocessor based servo controlled temperature system  
The microprocessor-controlled unit allows for three modes :pre-warm ,manual or automatic Timer to record therapy time Audible and visual Alarm.



**Functions:**

Power failure, temperature deviation, temperature sensor failure , skin temperature failure, over temperature. LED observation light adjustable, brightness adjustable Heater head can be adjusted  $\pm 90^\circ$  horizontally Convenient X-ray cassette board under infant bed Tilt angle of infant bed is adjustable Four Transparent protector folded with 2 infusion seals, With RS-232 connector, 2 tray and 2 drawers

## BN-100 Luxurious

Infant Radiant Warmer

Microprocessor based servo controlled temperature system  
Three modes: pre-warm, manual or automatic Set temperature and skin temperature display separately Special design inclined heater head is more convenience for X rays Carbon steel heater for more effectivity Audible and visual Alarm.



## BN-200 Standard

Height-adjustable infant radiant warmer

Microprocessor based servo controlled temperature system Three modes: pre-warm, manual or automatic Audible and visual Alarm functions : Power failure, temperature deviation, temperature sensor failure, skin temperature failure, over temperature 8"LCD colorful touch screen Carbon steel heater for more effectivity Special design inclined heater head is more convenience for X ray test Digital skin temperature sensor, the data is accurate and stable Allied bracket, fastness Alarms.

**Functions for safety includes:**

Power failure, temperature deviation, temperature probe failure, over temperature Integral timer to record therapy time Bigger mattress Skin temperature trend for 2 hours Electric infant bed tilt angle is  $\pm 12^\circ$  Four transparent protector folded with 2 infusion seals Convenient X-ray cassette tray under infant bed Electric height adjusted suit for operation With observe light, oxygen supply system and LED phototherapy With RS-232 connector, 2 trays and 2 drawers



# BL-500D

## Infant Phototherapy Lamp

LED Blue bulb as the radiant source, irradiating uniformly and efficient. Circle 360° double sides for more effective radiation Small in size, light and high irradiation Two phototherapy modes: up side phototherapy and down side phototherapy, can be use separately Therapy time of phototherapy units up and down side are separately display Automatically record each therapy time and total used therapy time Air temperature and skin temperature separately display Power off memory, alarm silence key , locking key and self-examination function Four alarm

Functions:  
Power failure, probe failure, over temperature, fan failure Count down setting available Two sides observation parts Air spring structure make the hood is easy open and close. The aluminum alloy is applied on the base, with 2 drawers and 1 tray.



# Infant Radiant Warmer

Product Code: 67-106

These range of warmers allow you to efficiently care and provide advance warming capabilities while using one touch operations to simplify procedures. Immediately after birth the new born baby experiences some degree of thermal instability as it comes from the mother's womb which has stable environment, to the cooler environment of the delivery room.



# Obstetrics & Gynecology

## Video Colposcope

With its bright LED cold lighting system, high resolution camera and electronic green filter, EDAN'S video colposcope provides a clear vision for colposcopic examination.

- LED cold lighting system assures real view of tissue
- Advanced and fast auto-focusing system ensures clear image
- Real-time display of magnification
- Electronic green filter enhances vascular image display without compromise of illumination
- Acetic acid and iodine reaction test timer to ensure the capturing on time
- Powerful image display and data management software
- Abundant clinical referencing images for confident decision-making
- Amount of clinical cases for better self-learning
- Comprehensive follow up management
- New innovation-RWay Evaluation System standardizes the interpretation of colposcopic findings
- DICOM 3.0 supportive



# Sono Trax Series

## Ultrasonic Pocket Doppler

It provides caregivers with the most cost-effective solution to meet the routine obstetric and vascular requirements.

- Compact design
- Ease of use
- Large backlit LCD display
- Interchangeable waterproof probe
- Support 2MHz, 3MHz, 4MHz, 5MHz, 8MHz waterproof probes
- Accurate FHR detection with high fidelity sound effect
- Auto, Average and Manual modes
- Built-in audio recorder
- Built-in rechargeable battery
- Automatic power-off to save power





# Baby Weighing Scale

DIGITAL AND MECHANICAL



# Bathroom Weighing Scale

DIGITAL AND MECHANICAL



# Body Weighing Scale

Digital with BMI | Dial type with height meter | Height Board



# Medical Oxygen Equipment

- Oxygen concentrators.
- Oxygen plants and
- Commercial oxygen plants



## Jay 1 portable Oxygen Concentrator



Portable oxygen concentrator whose oxygen output is 1-5L/min is small and light. Therefore, it is quite suitable for mobile use. Combined with an adaptor for vehicle, this oxygen producing machine can be mounted on automobiles. With rechargeable battery, this machine can be used when people travel. This is a cost-effective product appropriate for blue-and-white collar workers and the common masses.

#### Application:

1. This portable oxygen concentrator offers a great outdoor oxygen supply solution for patients who have to go out for a short time;
2. This portable oxygen concentrator can be used to cure headache and sleep apnea syndrome caused by cervical spondylosis;
3. Inhaling oxygen with this oxygen gas generator will help white-collar workers and students to regain energy;
4. This portable oxygen concentrating equipment is available for home health care of pregnant women or old people;
5. It helps relieve discomfort caused by haze;
6. suitable for oxygen cocktail making;

## Jay 5/ Jay 8/ Jay 10 series Oxygen Concentrator

The JAY-series oxygen concentrator, is energy-saving and safe to use. The optional dual-flow configuration allows two users to inhale oxygen at the same time by sharing one machine. It can be used for adjuvant treatment for respiratory system diseases, cardio vascular and cerebral vascular system diseases, chronic obstructive pulmonary disease, carbon monoxide poisoning and other hypoxia diseases. It is suitable for clinics, community hospitals, township health clinics, etc. Which can support for 24\*365 operation.

- Flow rate : 0-5lpm / 0-8lpm/ 0-10lpm
- Purity 93%

#### Product Description

- PSA - Pressure swing adsorption technology and adjustable flowrate.
- Nebulizer device can be fitted if necessary.
- Power failure alarm, pressure alarm, low purity alarm.
- Double flow meter control for two patients.
- Dehumidify function.
- Timer: (a) total working hours of the unit, (b) present working hours. (c) timer for 30/60/90/120 min - the unit shall stop by the time over.
- Ultraviolet light in the box on top of the unit to sterilize the used tube.



# Oxygen Splitter

For Babies & Adult use

**Product Application**

1. Medical use
2. Combining with separate flow meter to be used to supply oxygen for children or adults
3. Used in clinics or small hospital
4. Keep flat on the desk or hung on the wall



# Oxygen Plant

KELING

Oxygen plant for hospital and commercial use

**Working Principle**

Use air blower to supply compressed air into adsorption tower; adsorption in low pressure and adsorption in vacuum status. It means in the pressure (wind pressure) which is slightly above atmosphere pressure, using mixed bed composed of VPSA special molecular sieve and dryer to adsorb the N<sub>2</sub>, CO<sub>2</sub>, H<sub>2</sub>O and the impurities, making oxygen accumulated and collected at the end of bed. Saturation sorption of molecular sieve bed will be desorbed in vacuum status, so as to circularly generate high purity Oxygen. (90~95%)



**Specifications**

1. Produce Scale: 5~1500Nm<sup>3</sup>/h
2. Purity: 21%~95%(v/v)
3. Pressure: 10~25Mpa
4. Energy for Consumption Oxygen: 0.36~0.42KWh/Nm

**Technical Features**

1. Only need to supply fan and power for VPSA Oxygen generating system to produce oxygen.
2. Low energy consumption of equipment, low operation cost.
3. Easy to adjust the purity of oxygen, the purity can be adjusted from 21% to 95%.
4. Highly automatic operation, fast gases generating, fully automatic control system without anyone on duty. We can get the oxygen within 10~30 minutes after we start up the equipment.
5. Small structure and occupation area, low requirement for civil design.
6. Unique gas distribution technology and compaction, avoid the influence of reciprocating air on molecular sieve, in favor of extending their lifespan.
7. Fully automatic control system; Devices can be remotely monitored, start-up and shut-down.
8. Suitable for middle and large capacity.

# High Flow

Oxygen Compressor

10lpm/20lpm

**Features**

- Absolute dry, clean and oil free
- High compression ratio
- Fast filling
- Compact size and high mobility
- Easy and safe to use
- Simple, reliable and easy maintenance
- High flexibility
- Cost effective



# Oxygen Concentrator

High pressure

**Main features.**

- Automatic on and off
- Manual alarm removal
- Emergency stop button
- Audio and visual Alarm for high and low pressure
- Full digital control system
- Low purity Alarm function
- Applied in surgery especially connecting with ventilator and anaesthesia machine



# Oxygen Mask

High pressure



# Multi Gas Regulator

HEMC

This regulator can be used on a range of different gasses including CO<sub>2</sub>, Oxygen, Argon, Nitrogen and Beer Gas.



# Dental Machines & *Equipment*

- *Air compressors*
- *Teeth Whitening Machines*
- *Dental Units*



## KJ-917

### Dental Unit

- High speed handpiece connector 2sets
- Low speed handpiece connector 1set
- 3 way syringe (cold & hot )2pcs
- Operation lamp 1set
- Film viewer 1set
- Saliva ejector (strong and weak) 2sets
- integrated ceramic spittoon 1set
- Automatic cup fillerA
- Movable assistant deviceA
- Built-in water purified system 1set
- 24V D.C noiseless motor 1set
- Sanitary cushion and backrest 1set
- Doctor's stool 1piece

#### Optional Instruments:

- 1 Dental camera system
- 2 LED curing light
- 3 Ultrasonic scaler system
- 4 High speed handpiece
- 5 Low speed handpiece6air compressor
- 6 air compressor



## YD-A5

### Dental Unit

#### Operation System

- 24V Taiwan silent DC motor
- Italy imported solenoid valve
- Emergency stop control switch
- First aid treatment position
- Lowest chair position
- Clean chair position
- Chair interlock system
- Dentist Element
- Touch sense control system
- Down mounted tray
- 6 handpiece holder
- 3 way syringe
- 12V led x-film viewer
- Air lock control system
- 1 dentist stool
- Assistant Element
- Internal pipe disinfection and flushing system
- Saliva ejector with control switch
- 3 way syringe
- Patient Chair
- Seamless PU cushion
- Left & right armrest
- Operation Lamp
- Led sensor dental light with digital display prevent pre-curing of the photocurable resin

#### Unit Body

- Ceramic spittoon(can be rotary and removable)
- Copper pipe of water flush & water supply
- Pure water supply system-single water bottle
- 24V heater
- Massage heating function (only suitable for Fiber leather,optional)
- Foot pedal control
- New 6 in 1 multi-function foot controller
- Chair lift & backrest pitch
- Water flushing & water supply
- Mist control
- Stainless steel pipe

#### Others

- Paper cup bucket
- Transparent foot pad
- Main & assistant control with silicone pad
- Pipe and hoses
- Imported USA water & air pipe



## M208A/M209A/M209B

### LED Teeth whitening machine

#### Features & details

- With 11 high power LED lights (8 \* Blue Light 3 \* Purple Light)
- Wavelength of blue light: 460-490nm
- Wavelength of purple light: 390-430nm
- Density: 200-300mw/CM2
- Timing: 10-15min for one time, two or three times for a treatment



# Movable KL 012

## Dental X-ray Machine

**Product Description**

- 1: Use the international advanced technology, high-efficiency, clear imaging, low leak radial, it is only 1% of national standard.
- 2: Light touched button, controlled with microcomputer, only press one button to select the expose parameter, fast and accurately.
- 3: Developing in light room, image in one minute, the doctor can diagnose conveniently for maximum.
- 4: Pneumatic up-down seat, more convenient and more comfortable
- 5: It is for the use of the digital imaging system of mout.

**TECHNICAL SPECIFICATION:**

1. Power supply: AC 220V/0%~50/60HZ 1 kVA
2. Tube voltage: 70KV
3. Tube current: 8mA
4. Focussize: 0.8mm
5. Total filtration: 2.5mmAL
6. Exposure time: 0.1 -4sec
7. Leak radiation: outside one meter= 0.002mGy/h



# Wall Mounted KL 011

## Dental X-ray Machine

**CHATACTERISTIC:**

The microprocessor-controlled timer brings high-tech X-ray imaging at your fingertips.

The control panel allows an accurate and fast exposure time selection while protecting the head during X-ray examinations. Fitted with 70KV 8mA tube with preheating grid. The machine has been specially designed for intraoral dental diagnosis applications. Complies with local and imitational regulations on ionizing radiation protection for maximum safety.

The soft positioner arm ensures naturally smooth and well-balanced movements. It is easy installed at the desired height and length. Its ergonomics and design have been studied to meet the requirements of the most semanding practices in matters of floor space optimization.



# Candomed 23-II-LD

## Dental Autoclave

**PRODUCT CHARACTER:**

1. Based on the new class B of international prEN13060, have 3 pulsating vacuum, Vacuum up to -0.9Bar (-0.09Mpa). Suitable to sterilizing wrap, unwrap, solid, porous, hollow device.
2. Use imported & advanced 16-bit microprocessor, easy to operate. Most suitable for the Dept of Stomatology, Ophthalmology, Surgery and Lab.
3. With BD test and vacuum test procedures. To test the penetrability
4. The jet type of steam generator, ensure the efficient sterilizing.
5. With alarm system for waste water tank, avoid the waste water to enter into the sterilizing circulation, make the sterilizing completely.
6. Precise digital display and advanced self-test system ensure you get the working data freely.
7. Double lock door for safety during operating.
8. Optional inbuilt mini-printer or USB connector to record the process of sterilizing.



# KJ800/500

## Dental Air Compressor

- Specification:** power:800/545w  
**Detail:** Model No. KJ800/500  
**Power:** 800W Flowrate :81L/Min Noise:64db Cubage:32L  
**Pressure:** 7.5bar



KJ1000



KJ800

# KJ1000/1600

## Dental Air Compressor

- Specification:** power:1600w  
**Detail:** Model No. KJ1600  
**Power:** 1600W Flowrate :162L/Min  
**Noise:** 66db Cubage:60L  
**Pressure:** 7.5bar



# Xray Machines & Imaging Equipment

- Radiography
- Film Processors



# PLX160A Radiograph System

High Frequency X-ray (200mA)

**Technical Parameters:**

Power Output: 25KW  
 Inverter Frequency: 40KHz  
 Dual-focus: Small focus: 0.6 | Large focus: 1.3  
 Tube Voltage: 40-125KV  
 Tube Current : 200mA | mAs 0.4-360mAs  
 Power supply: 380V



The x ray machine is used to photograph patient's chest, stomach, lumbar and extremity.

**Features of medical x ray system**

1. The x ray machine is installed with close-table graphical colorful LCD touch screen, wireless remote control exposure, make the operator easy to use.
2. We incorporate the latest compact high-frequency and high-voltage X-ray generator, which ensure superior image quality, while the skin dose is low , to protect the patient better.
3. Adopt the technology of kV and mAs numeral Closed loop control . Real-time control of the microprocessor

, which ensure the accuracy and repeatability of the output dose.

4. Be equipped with radiography parameter of multi-part, multi-posture, multi-body type's adult ,child physical characteristic, the operator can modify and save the parameter by himself, which make the operation more conveniently.
5. Possess multiple automatic protection and fault clue function, make the operation more safe and reliable.
6. The radiography table can float in any direction, electromagnetic braking, position the patient more convenience and accuracy.

7. X-ray generator component can move round the axis of X-ray generator, crossarm and Pillar stand , be convenient with sides and slanting direction projection and radiography of patient on the stretcher.

8. Be equipped with bucky stand, which is used in the radiography of the head, chest, belly, pelvic cavity, backbone and periphery.
9. Control console of graphic program controlled LCD touch screen is optional, which can modify the radiography parameters and can exposure in another room.

# PLX101C/D Medical Mobile X-Ray unit

High Frequency X-ray

**Technical Parameters:**

Power Output: 5KW  
 Main Inverter frequency: 40 KHz

**X-ray Tube:**

Fixed anode focus: 1.5 (X-ray tube for high frequency)  
 Tube Voltage: 40KV--120KV (interval 1KV)

Tube Current: 25mA--100mA  
 mAs: 1.0-180mAs (46steps)

Power Supply: 220V±10% 50Hz Inner-resistance ≤1.0Ω  
 Operation Method: Wire/wireless control

**Features of High Frequency mobile x ray unit(PLX101C)**

1. Use a assembly high-frequency high-voltage generator, kV closed-loop control and mAs digital closed-loop control technology, microprocessor Real-time control, ensure dose accuracy and repeatability.
2. kV,mAs two buttons adjustment, LCD display, parameter memory.
3. With 50 preset anatomy programs, and parameters can be modified by the user.

4. With over high voltage protection, tube over-current protection, output overload protection function, more secure and reliable.
5. The structural design of Ergonomics, simple and easy operation.
6. Use special high-quality batteries as the machine power supply, once fully charged, about 200 times the normal expose, avoid the fluctuations in net power supply to impact on the film effectiveness, photography quality more stable and reliable.



# PLX 112B series

## High Frequency Mobile C-arm System

### Features

- High frequency high voltage x-ray generator and high precision digital pulse control technology ensure excellent image with low skin dose.
- Digital radiography function, no more film-screen system, simplify the operate process.
- Maximum optimize the image brightness and definition depend on the kV/ mA auto trace function.
- Electric controlled rotated beam limiting device can satisfy multi-angle and multi-directional anatomical display requirements.  
High quality image intensifier.
- High definition CCD camera.
- High-resolution high-brightness monitoring system.
- Equipped with workstation to realize the functions include registration, image collection, processing, issue the report and so on, Dicom interface to connect the hospital imaging network.
- Divertible main wheel together with direction wheels make movement more flexible.
- Electric support arm make the movement of machine more stable during moving.



# U-ARM

## High Frequency Digital Radiography System

### GENERAL ELECTRICAL PERFORMANCE

Maximum output power: 55kW  
 Inverter frequency: 60kHz  
 Tube voltage for radiography: 40–150kV  
 Tube current for radiography: 10mA–500mA  
 Exposure time: 0.001s–12.5s  
 mAs for radiography: 0.10630mAs  
 Power supply: 380 V, 50 Hz  
 Shortest time for AEC: 5ms

### X-RAY TUBE ASSEMBLY

Focus: 0.6/1.2mm  
 Power for focuses: 27kW/75kW  
 Anode thermal capacity: 270kJ (300KHU)  
 Anode target angle: 12°  
 Anode rotating speed: 9700rpm  
 Tube thermal capacity: 900kJ

### DIGITAL DETECTOR

Detector type: flat panel  
 Scintillating medium type: cesium iodide  
 Field: 17"×17"  
 Pixel matrix: 3k×3k  
 Pixel size: 143µm  
 Limited spatial resolution: 3.6lp/mm  
 Shortest imaging time ≤ 12s

### U-ARM AND PILLAR SYSTEM

- U-arm vertical lift distance ≥ 1250 mm
- Focus screen distance adjustment range 1000mm - 1800mm
- U-arm rotation range: -40°—130°

### IMAGING WORKSTATION

- Acquisition Module  
Gigabit Ethernet acquisition, enhanced image adaptive processing
- The image processing module

Tissue Equalization, W / L adjustment, points of interest, a negative phase, noise reduction, smoothing, sharpening; single window, double window, four-window, multi-window, move, right-handed 90-degree, 90-degree left-handed, horizontal mirror, vertical mirror magnifying glass, image scaling, image restoration, layer information, text annotation, image annotation, length measurement curve measurement, angle measurement, rectangular length, area of a rectangle, ellipse length, oval area, polygon area, measuring edit measuring deleted.

- The image information management

DICOM image storage, DICOM image read, DICOM image printing, DICOM image transmission

### STANDARD CONFIGURATION

High quality, high frequency, high voltage generator device  
 X-ray tube assembly  
 17"×17" flat panel detector  
 High-performance image processing workstation  
 19" grayscale medical LCD monitor  
 Color graphical LCD touch control device  
 Electrical box  
 New U-arm main frame  
 With a light source symmetrical adjustable collimator  
 AEC automatic exposure ionization chamber

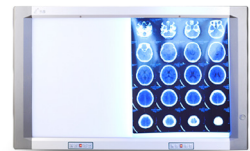
# X Ray film viewer

## (Keling)

### Features

- With the function of:
  - Automatic switching-on upon film-inserting
  - Delayed switching-off after a film is removed

**Install method:** wall-mounted type and bracket type (the bracket is an optional component).



# Central Sterile Supply Department (CSSD)

## *Equipment*

- Autoclaves
- Holloware
- Sterilizing Drums



## Instrument Sterilizer

ELECTRIC (Product Code: 25-101E)

- Jointed construction from stainless steel.
- Insulated lifting handles on either side.
- Insulated lid lifting handle.
- Supplied with perforated trays and lifting handles.
- Fitted with electric element.
- Supplied with power cord.
- Operates on 220-240V, 50Hz.

From 2 litres to 19 litres



## Instrument Sterilizer

NON-ELECTRIC, ECONOMY  
(Product Code: 25-111NE)

- Suitable for rural areas where there is little or no provision for electricity.
- Jointed construction from stainless steel.
- Insulated lifting handles on either side.
- Insulated lid lifting handle.
- Supplied with perforated trays and lifting handles.

Available from 2 litres to 15 litres



## Autoclave - Electric, Wing-Nut Type

21lit/25lit/27lit/30lit/39lit

### DESCRIPTION

A conventional, vertical, portable, seamless autoclave wherein the body and lid are locked together against a jointless rubber gasket by 6 swivel bolts with large hand wheels.

### Features:

- Constructed from Aluminium.
- Seamless body eliminates formation of bacteria residue and dirt accumulation.
- Lid fitted with Pressure Gauge reading from 0 - 30 lbs/in<sup>2</sup>, Safety Valve pre-set to 15 lbs/in<sup>2</sup> and an Double Safety Valve, Steam Release Valve and Vacuum Release Valve, Rubber Gasket.
- Body fitted with heating element and carry handle.
- Operates on 220-240V, 50Hz.

### Accessories Supplied:

- Inner aluminium vessel to hold materials for sterilizing.
- Tripod Stand to hold the inner aluminium vessel.
- Tripod Stand to hold the autoclave.
- Power plug and electric lead.



# Autoclave - Electric, Pressure Cooker type

Product code: 25-125E-AL

The Portable Single Drum Autoclave is a highly efficient apparatus which is designed to meet the requirements of small dispensaries, nursing homes, laboratories, medical missions, clinics, ships operating theatres, pharmaceuticals, etc. It is very simple to operate and economical to use. The container is seamless made of thick Aluminium sheet or stainless steel as per quality required. The lid is made of aluminium casting or stainless steel as per customer requirement. It is fitted with timer, low water cut off pressure switch or any other customer requirements. The safety valve is adjusted to blow off the steam at 17 lbs. p.s.i. maintaining the constant pressure of 15 lbs. The entire autoclave is heavily Aluminium alloy/stainless steel. The container being seamless, there is no leakage and hence it ensures quite a longer service. The autoclave is made for use on electrically and gas.



## Autoclave - All American Electric

25X/50X/75X

All American Electric Steam Sterilizers, models 25X, 50X & 75X. These units are available in either 120 or 240 volts. One of the most important things to note is that the 25X Electric Steam Sterilizer uses a 1050 watt heating element while the other units (The 50X and 75X) each have a 1650 watt heating element.

The Model 50X and 75X uses a 1650 watt heating element. This increased wattage and heating capacity means that the units will get up to operational temperature far quicker than the 25X. Plus, the 50X & 75X have all new electrical controls as well as a new thermostat which is designed to hold a much tighter operating band.

Therefore there will be less variation as the thermostat turns the heating element on and off to maintain a certain level of heat. All American steam sterilizers are used world-wide to sterilize a wider range of materials. Temperature, pressure and time are the main factors in this process.

All American Sterilizers make it possible for doctors, dentists, first aid stations, hospitals, laboratories and of course, mycologist to have dependable sterilization facilities in a portable unit at an extremely low cost.



**Features:**

- Portable, Economical, Reliable Operation
- Metal to Metal Seal
- The metal to metal seal eliminates all rubber gaskets.
- Pressure Gauge Accuracy
- Pressure Relief Valve
- UL Approved
- Heavy cast aluminum cover and bottom construction
- Aluminum inner container with rack
- Flexible metal exhaust tube
- Dial gauge and control valve
- Metal-to-metal seal (no rubber gasket)
- Large sterilizing capacity
- Complete, effective sterilization at the lowest possible cost.

## Autoclave - All American Non Electric Sterilizer

1915X/1925X/1941X

Can be used over any effective heat source\*

Used over any effective heat source, the All American Non Electric Sterilizer provides dry sterile dressings and instruments, with all bacteria and micro-organisms destroyed, in a matter of minutes.

Only All American Sterilizers feature an exclusive, precision machined "Metal-to-Metal" sealing system.

Positive action clamping locks align the cover to the base forming a steam tight seal. Because no gasket is involved, the cover is always easily opened and closed



**Features:**

- Suitable for dental, medical, veterinary facilities, laboratories and health and cosmetic applications
- Crafted of the finest hand cast aluminum that resists aging and corrosion
- Stay-cool bakelite top handles and wing nuts
- Removable aluminum inner container with rack
- Portable, economical, reliable operation
- Pressure gauge conforms to the pressure gauge standard ANSI B40-1-1980
- Flexible metal exhaust tube

# Autoclave - Pressure Steam Sterilizer Aluminium

Pressure Cooker Type, Non Electric

#### SPECIFICATION

- Aluminium deep drawn Seamless Construction
- Sturdy, Safe, Rust proof, Portable, Polished Shiny Finish
- For high pressure steam sterilization of medical materials such as dressings and surgical instruments.
- Max Pressure 15 psi/1.5 bar, Max temp 121 C
- Equipped with steam release/ control valve, high quality heat resistant Bakelite handles
- Lid Sealing by high pressure rubber gasket
- Pressure Gauge with color coding to display sterilization zones, 2.2 graduated in kg/cm and lb/inch
- Equipped with Safety Pressure release weight valve
- Non-Electric

Sits, 11lts, 21lts, 24lts, 26lts, 39lts, 40lts.



## Electric Autoclave

B35L/ LS-B50L/ LS-B75L/  
LS-B100L/ LS-B150L/ LS-B200L

#### PRODUCT CHARACTERISTIC:

1. Auto-control type
2. Structure of hand wheel type quick-door-open safety interlock device (accord with the 49th requirement of Vessel Regulations)
3. Material: outer and chamber are made of high quality stainless steel SUS304.
4. Acid proof, alkali resistance, anti-corrosive
5. Microcomputer intelligent control
6. Pressure safety interlock device, over temperature protection device
7. Auto-raising type packing ring, exhaust cold air automatically
8. High and low water level alarm, auto-control when lack of water
9. Temperature range (0°C-135°C), time range (0-999min)
10. Max. Design/work pressure (0.25MPa-0.22MPa)
11. Auto-exhaust when over pressure
12. Inner circulation exhausts type, with 3L steam collection bottle
13. Auto drain with buzzer remind after sterilization and close-down automatically Three control modes: a. heating-sterilization-exhaust b. heating-sterilization-pulse exhaust c. heating-sterilization-without exhaust



## Dressing And Sterilizing Drum

(Dolphin)

#### Product Description:

Dressing Drums are used for sterilizing and storing various types of dressings, instruments and surgical requisites that are used by the patients in a disinfected way. These drums are made from high quality hard stainless steel with different layers such that more items can be kept inside it. It also has holes that allow exhausting the steam from outside. Dressing drum is a vital part in a hospital as we believe that only the germ-free environment can bring the patients into good conditions.



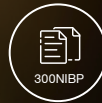
# SA-10

## Ambulatory Blood Pressure Monitor

The Edan ABPM SA-10 is a 24-hour ambulatory blood pressure monitor with stylish design, intelligent software, state-of-the-art blood pressure monitoring technologies, developed to avoid white coat hypertension, masked hypertension and sustained hypertension. With the help of SA-10's powerful analysis software, clinicians will manage patients' cardiovascular risks with ease and make clinical decisions with confidence.



Self-locking structure



Memory



IP22



Wireless transmission



Lightweight design



Glass panel

## Feature Highlights

- Lightweight, compact and quiet for better patients compliance
- Large blood pressure measurement range from 10mmHg to 290mmHg
- Proprietary algorithm with excellent motion resistance performance
- Data protection from power outage
- Auto re-measurement on failed measurement attempt

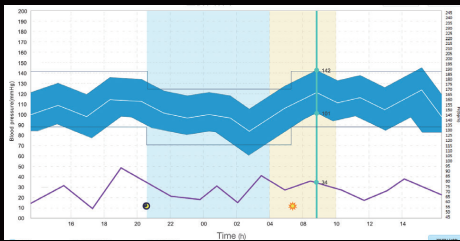


# Powerful software for comprehensive analysis

With the aid of the SA-10's powerful analysis software, the clinicians can have a better insight into the variation of patient's blood pressure within 24 hours, easily identifying the periods when the blood pressure values are above limits. The informative statistical table provides a clear presentation of the measurement summary throughout the day.



Pie Chart Analysis



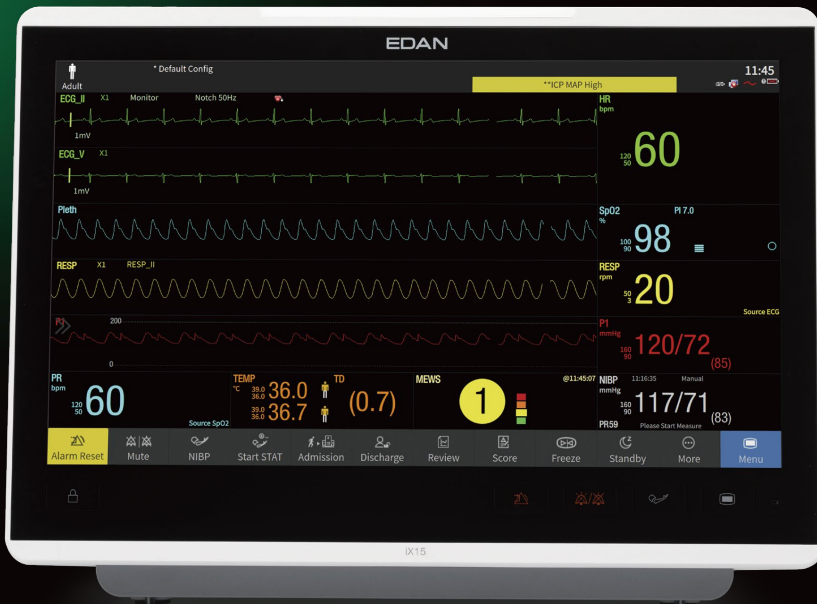
Circadian Analysis

		Percentage of Valid Lists	Average	Standard deviation	Max	Min	HR load	Nighttime BP decrease	Coefficient of Variation	Missing Surge	AAI
Day (17:00-07:00)	Systolic blood pressure(mmHg)	143	21.7	175	100	50.0%		16.6%			
	Diastolic blood pressure(mmHg)	115	23.7	146	100	80.0%		28.6%			
	Pulse rate(times per min)	66	8.5	68	50			9.8%			
Night (07:00-17:00)	Average blood pressure(mmHg)	124	21.5	155	86			18.9%			
	Pulse pressure(mmHg)	27	6.5	39	20			23.1%			
	Systolic blood pressure(mmHg)	134	25.5	174	90	77.8%		19.0%			
Overall (24:00)	Diastolic blood pressure(mmHg)	106	21.4	137	90	88.9%		22.1%			
	Pulse rate(times per min)	57	5.8	65	50			10.0%			
	Average blood pressure(mmHg)	115	21.9	149	69			20.7%			
Overall (24:00)	Pulse pressure(mmHg)	27	6.3	37	21			22.6%			
	Systolic blood pressure(mmHg)	138	24.3	175	90	63.2%		17.5%	46.7		
	Diastolic blood pressure(mmHg)	111	21.4	146	90	84.2%		21.1%	20.7	0.07	
Overall (24:00)	Pulse rate(times per min)	57	5.5	68	50			9.7%			
	Average blood pressure(mmHg)	120	21.5	155	69			19.6%			
	Pulse pressure(mmHg)	27	6.2	39	20			22.3%			

Statistical Analysis

# iX Series

Patient Monitor



Widescreen  
with high resolution



No-fan Design



Waterproof & Dustproof



Multiple-view strip  
designed alarm indicator



Anti-glare display  
with 170° viewing angle



Auto brightness adjustment

## Standard Parameters:

3/5/6-lead ECG, EDAN SpO<sub>2</sub>, NIBP, 2-TEMP, RESP

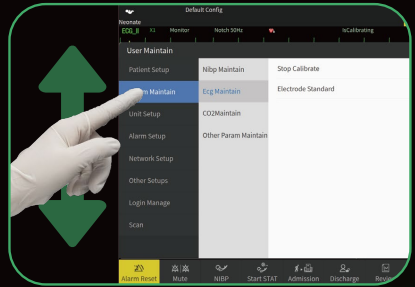
## Optional Parameters:

12-lead ECG, Nellcor SpO<sub>2</sub>, Dual-SpO<sub>2</sub> (EDAN), 2-IBP (iX10/iX12), 4-IBP (iX15), C.O., EDAN G2 CO<sub>2</sub>, Masimo CO<sub>2</sub>, EDAN G7 AG (iX12/iX15), Masimo AG (iX12/iX15)

# Optimized Workflow



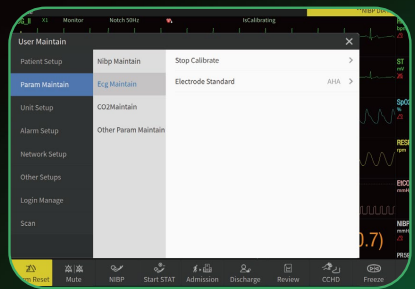
Flat panel with integrated full touch screen and buttons



Gestures control like swipe



Pull-down quick menu help to do a quick setting



Progressive menu for better understanding and easy operation

# Reliable Parameter & Algorithm

- Monitoring ECG iSEAP™: Excellent sensitivity in arrhythmia and heartbeat detection, ST analysis, and giant T-wave differentiation.
- Diagnostic ECG SEMIP®: Provides 208 ECG findings over age/gender diversities.
- SpO<sub>2</sub> iMAT™: Improved stability in high-motion and low-perfusion conditions.
- NIBP iCUPS™: Confirmed accuracy in cardiac, hypertensive and neonatal patients.
- G2 CO<sub>2</sub> iCARB™: Intelligent identification of CO<sub>2</sub> pseudo waves.
- G7 AG iAPRB™: High performance in anesthetic gases analysis with paramagnetic O<sub>2</sub> detection.

# F15 - Fetal & Maternal Monitor

## Evolutionary Generation of Fetal Monitoring

As an ultimate CTG machine, F15 series fetal and maternal monitor is the perfect combination of advanced technology and sophisticated algorithm for Obstetrics' new era. With state-of-art design, delicate appearance and strong mechanical structure, F15 presents the midwives with the deepest sincerity to bring the most efficient work flow to clinics, such as automatic probe activation and wireless charging, to keep the monitoring process in hand all the time. Consider F15 not only for today's monitoring needs but also as an enduring platform for the future. There are two models for different clinical environment, the wired and the wireless configurations.



15 mins Backup  
Memory



Monitoring Pause



Transducer  
Plug and Play



Lightweight design  
<100g



Triplets Monitoring



FHR&MHR



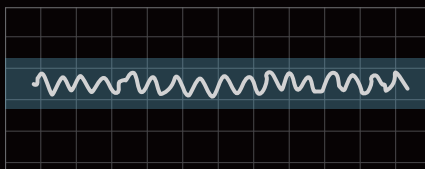
# Free for movement

Bring freedom in OB clinics by offering wireless accessories including fetal monitoring and maternal monitoring, midwives are no longer being fussy by messy wires surrounding the equipments and the patients. Even more, F15 supports non-stop monitoring when transferring mom-to-be from labor room to delivery room. By 'TRANSFER' function, patients data could be switch from one device to another one at one click.

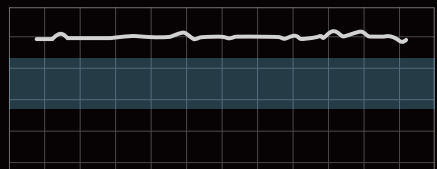


# Sophisticated alarm function

The essential purpose of monitoring fetal heart rate is to be alert to abnormal fetal heart rate condition. Since CTG is non-invasive long term monitoring methods, it is difficult to be alert to severe condition timely. To include more sophisticated alarm information on F15 gives more power to midwives for quick identifying critical clinical case.



Sinusoidal fetal heart rate



Low variability fetal heart rate

# iM3s - Vital Signs Monitor

## Small outside, smart inside

Being the smallest vital signs monitor among its kind, iM3s presents a fashionable handheld design, delivering extraordinary portability throughout spot checks. Though small in size, it integrates all necessary vital measurements together, including SpO<sub>2</sub>, NIBP and optional TEMP.

### A Dedicated Spot Monitor

With its pleasing size and large capacitive touch screen, iM3s could be operated by one hand, bringing comfortable and familiar user experience to daily applications. For each test, all measurements and custom parameters could be displayed on the same screen, while the test results being saved automatically in its built-in non-volatile memory or transfer to hospital information system.



300g

Lightweight Design



IP44

Waterproof & Dustproof



1M

Shock Resistance



≥8hour

Minimum Run Time



Wi-Fi

Network Connection



e-Link

Wireless Connection



20,000 sets

Internal Storage



Barcode Scanner



# Tabletop Expansion

Plugged onto an optional tabletop dock, the iM3s easily fits into regular tabletop applications, enabling more possibilities, including AC charging, optional thermal recording, optional temporal temperature measurements, etc.



## Powerful functions with flexible configuration

### Main Unit

- Standard Configuration: SpO<sub>2</sub>, NIBP, Capacitive touch screen, Li-ion battery
- Optional Configuration: Built-in barcode scanner, 2.4G/5G Hz Wi-Fi, e-Link

### CS-04 Charger Stand

- AC power supply

### CS-05 Charger Stand

- Standard Configuration: Built-in Li-ion battery, AC power supply, USB port, RJ45 port
- Optional Configuration: Thermal recorder, Exergen TEMP (TAT-5000S)

# VS500S

## Premature, Neonatal & Pediatric Ventilator

### 10.4" highly sensitive capacitive touchscreen

Provides clear vision with comprehensive monitoring data.

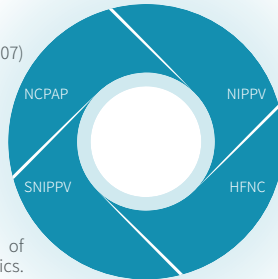
- Easy to learn, Easy to operate
- User-friendly interface
- No hidden menu
- Immediately access and change ventilation modes and parameters



### 4 types of ventilation mode fully cover various clinical needs

**NCPAP** appears to stabilize the chest wall and upper airway and to reduce apneas. Early application of CPAP might also preserve surfactant. [1]

RT staff. (2007)



**SNIPPV** can improve stability of chest wall and pulmonary mechanics. SNIPPV can be a means to wean infants from mechanical ventilation. [3], [4]

Santin et al. (2004)  
Dumpa et al. (2012)

**NIPPV** is associated with a significantly decreased need for intubation including among the extremely preterm infants. [2]

Shi et al. (2020)

**HFNC** is to optimize spontaneous breathing through the reduction of dead space and the creation of positive distending airway pressure. [5]

Farghali, O. G. E. (2017)

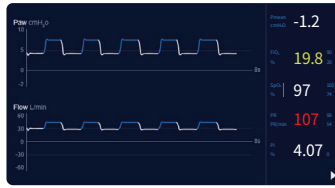
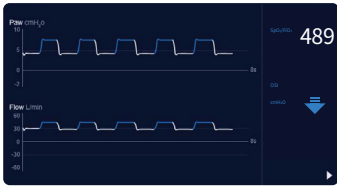


[1] RT Staff. (2007). NCPAP for the Neonate. <https://m.mgazine.com/obgyn/critical-care/articles/nccap-for-the-neonate/>  
[2] Shi, Y., Munitamam, H., Birnbaue, M., & Ramnarayan, R. (2020). A review on non-invasive respiratory support for management of respiratory distress in extremely preterm infants. *Frontiers in pediatrics*, 8, 270.  
[3] Santin, R., Brodsky, N., & Bhargava, V. (2004). A prospective observational pilot study of synchronized nasal intermittent positive pressure ventilation (SNIPPV) as a primary mode of ventilation in infants > 28 weeks with respiratory distress syndrome (RDS). *Journal of perinatology*, 24(6), 467-469.  
[4] Dumpa, V., Katz, R., Northrup, V., & Bhandari, V. (2012). SNIPPV vs NIPPV: does synchronization matter?. *Journal of Perinatology*, 32(6), 438-442.  
[5] Ota G.E. High-Flow Nasal Cannula in Neonates. *Respiratory Care* May 2017, 62(5) 641-642. <http://rcjournal.com/content/62/5/641>



## Real-time monitoring assures patient safety

With SpO<sub>2</sub> module, VS500S has real-time monitoring including 3 waveforms, SpO<sub>2</sub>/FiO<sub>2</sub>, PI and OSI to give more reference for clinical decision to facilitate early diagnosis of Acute Lung Injury and Acute Respiratory Distress Syndrome.



- **Oxygen Saturation Index- (OSI) A noninvasive Tool for Monitoring Hypoxemic Respiratory Failure in Newborns**

OSI can be calculated readily and continuously at the bedside, without the need for invasive blood sampling, and may be useful in identifying infants with mild to moderate HRF and evaluating response to some interventions. [6]

Doreswamy et al. (2016)

- **Perfusion index (PI)**

Perfusion index (PI) is normally monitored with pulse oximeters. It is a good indicator of the reliability of the pulse oximeter reading, and can be used as a non-invasive tool to predict illness severity and mortality in pediatric ICU and emergency departments. [8], [9]

Bazaraa et al. (2021)

- **SpO<sub>2</sub>/FiO<sub>2</sub>**

The SpO<sub>2</sub>/FiO<sub>2</sub> is an independent indicator of ARDS development among patients at risk. [7]

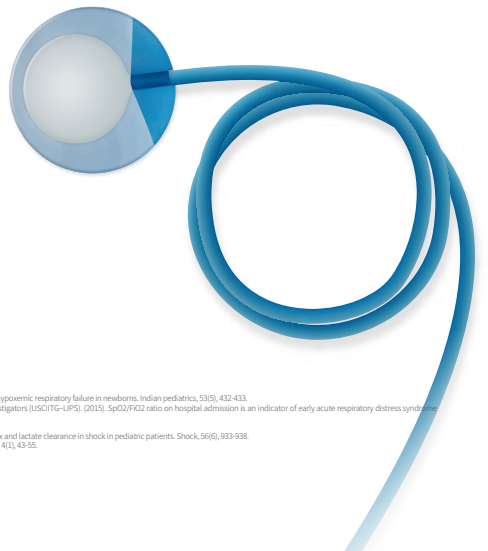
Festic et al. (2015)

- **Waveforms: Pressure-T, Flow-T, SpO<sub>2</sub>-T**

Provide real-time information about patient-ventilator interaction and ventilator function. You can observe the change in a patient's condition from breath to breath, detect problems related to mechanical ventilation, evaluate the patient's response to interventions, and use this information to adjust therapy as needed. [10]

Lian, J. X. (2009)

According to the neonatal unique breathing pattern, abdominal respiratory sensor was adopted to prevent apnea and start apnea back up ventilation on time.



[6] Doreswamy, S. M., Chakkarapani, A. A., & Murthy, P. (2016). Oxygen saturation index, a noninvasive tool for monitoring hypoxemic respiratory failure in newborns. *Indian pediatrics*, 53(5), 432-433.

[7] Festic, E., Barnard, V., Nor, D. J., Gajic, O., & US Critical Illness and Injury Trials Group Lung Injury Prevention Study Investigators (USCITIG-LIPS). (2015). SpO<sub>2</sub>/FiO<sub>2</sub> ratio on hospital admission is an indicator of early acute respiratory distress syndrome development among patients at risk. *Journal of intensive care medicine*, 30(4), 209-216.

[8] <https://www.ampersdirect.com/pc/help-pulse-oximeter/?what-is-pi.html>

[9] Bazaraa, H., Roby, S., Salah, E., & Algehably, H. (2021). Assessment of tissue perfusion using the peripheral perfusion index and lactate clearance in shock in pediatric patients. *Shock*, 56(6), 933-938.

[10] Lian, J. X. (2009). Understanding ventilator waveforms—and how to use them in patient care. *Nursing2020 Critical Care*, 4(1), 43-55.

# Aeon8800A

## Anesthesia Workstation

### Protect lungs protect you



**AEONMED**

Beijing Aeonmed Co., Ltd.  
 Jing Building 1, No. 20, Chongqing Road,  
 Fengtai District, Beijing 100070, China

#### Description

- CE certificate, meets EU clinical requirements
- The digital flowmeter makes fresh gas flow setting easier and more precise
- Comprehensive ventilation modes including PCV-VG and SIMV-VG provide more options for respiratory management
- 15" TFT LCD color touchscreen, highlighted display
- Alloy breathing system, easy to remove and clean, fully autoclavable
- Continuous trend information is stored and shown in table and chart
- The constant temperature heating system prevents moisture condensation, making monitoring undisturbed and making patients more comfortable

#### Technical Specification

- Dimensions(H×W×D): 1403×704×750 mm (without YOKE)
- Weight: 110kg (basic unit)
- Operation Temperature: 10–40°C
- Operation Humidity:  $\leq$  80% (noncondensing)
- Storage Temperature: -20–60°C
- Storage Humidity:  $\leq$  95% (noncondensing)

#### Electrical Specifications

- Mains: AC 100–240V, 50/60Hz
- Battery: DC 24V 4Ah, minimum 120 min
- Outlets: 4 on back, 1.5A individual

#### Pneumatic Specifications

- Gas Supply: 280 – 600kPa
- Electronically controlled mixer: O<sub>2</sub> 0–18L/min
- Or set each gas independently: O<sub>2</sub>: 0–10L/min  
N<sub>2</sub>O: 0–10L/min  
Air: 0–10L/min
- Auxiliary O<sub>2</sub>: 0–15L/min
- Gas System: Oxygen supply failure protection
- O<sub>2</sub> flush: 25–75L/min
- Gas cylinder:  $\leq$  Optional
- AGSS: Optional auxiliary common gas outlet
- AGSS: Optional

#### Breathing System Specifications

- Operating Modes: Closed, Semi-closed, Semi-open
- CO<sub>2</sub> Canister: single canister 1.5L
- APL Range: Spontaneous breathing (SP)–70 cmH<sub>2</sub>O
- Material: Autoclavable (except O<sub>2</sub> cell and pressure gauge)
- CO<sub>2</sub> bypass: Optional

#### Ventilator Specifications

- Driven Mode: Pneumatically driven and Electronically controlled
- Patient Types: Adult and Pediatric
- Ventilation Modes: IPPV, PCV, SIMV-VC, PS/CPAP and Manual optional: SIMV-PC, PCV-VG, SIMV-VG
- Man/Vent. switch: One key switch
- Tidal Volume: 10–1500ml
- Ventilation Frequency: 2–100bpm
- I:E: 4:1–1:5
- P (inspired) Range: 5–70cmH<sub>2</sub>O
- P (support) Range: 3–50cmH<sub>2</sub>O
- Inspiratory Time: 0.2–1s
- PEEP: OFF, 3–30 cmH<sub>2</sub>O
- Tslope: 0–2s
- Inspiratory Plateau: OFF, 5%–60%Ti
- Trigger: 1–15L/min
- Compensation: Compliance and leakage compensation, fresh gas compensation, altitude compensation

#### Ventilator monitoring & alarm

- Pressure: Paw, Ppeak, Pplat, Pmean, PEEP
- Volumes: MV, Vt, Freq
- Gas: FIO<sub>2</sub>, optional: CO<sub>2</sub>, AG, MAC
- Graph Display: P-t, F-t, V-t waveform
- P-V, F-V, P-F loop
- Alarm: Audible and Visual alarms
- High/Low Airway Pressure
- Continuous airway pressure
- High/Low Minute Volume
- High/Low FIO<sub>2</sub>
- High Freq.
- O<sub>2</sub> Supply failure, Power failure
- Apnea
- Alarm Silence:  $\leq$  120 seconds

#### Vaporizer

- Support two vaporizers (optional standby vaporizer parking holder)
- Agent: Sev. Enf. Iso. Halo. Des.
- Installation Mode: Selectatec® with interlock
- Filling Type: Pour-Fill, Key-Fill, Quik-Fill





# CATALOGUE

## MEDICAL EQUIPMENT

FIRST EDITION

THEATRE | DIAGNOSTICS | DENTAL EQUIPMENTS | AUTOCLAVES

Website: [www.harleysltd.com](http://www.harleysltd.com) | Email: [equipments@harleysltd.com](mailto:equipments@harleysltd.com)

NAIROBI - KISUMU - MOMBASA - ELDORET - KAMPALA - DARESALAAM